

STATE OF MISSISSIPPI  
**OFFICE OF STATE AID ROAD CONSTRUCTION**  
**MISSISSIPPI DEPARTMENT OF TRANSPORTATION**

PLAN AND PROFILE OF PROPOSED  
**COUNTY HIGHWAY**  
 STATE AID PROJECT NO. SAP-45(10)M  
**BOZEMAN ROAD**  
**MADISON COUNTY**

LAYOUT 1 IN. = 1,000 FT.

LENGTH DATA

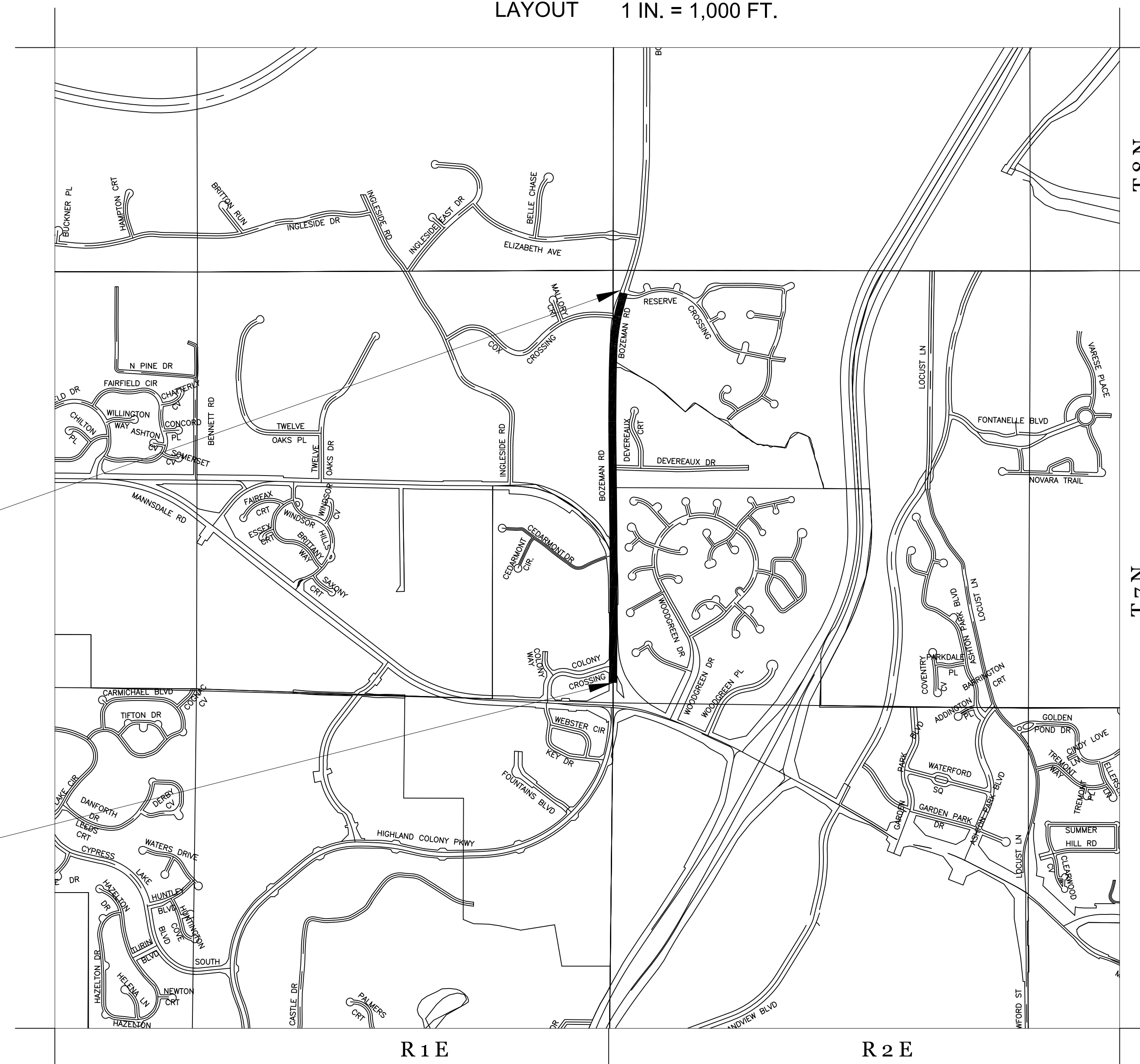
EXCEPTIONS

NONE

EQUATIONS

NONE

LENGTH OF ROADWAY	4,800.00 FT.	0.909 MI.
LENGTH OF BRIDGES	0.00 FT.	0.000 MI.
LENGTH OF PROJECT (NET)	4,800.00 FT.	0.909 MI.
LENGTH OF EXCEPTIONS	0.00 FT.	0.000 MI.
LENGTH OF PROJECT (GROSS)	4,800.00 FT.	0.909 MI.

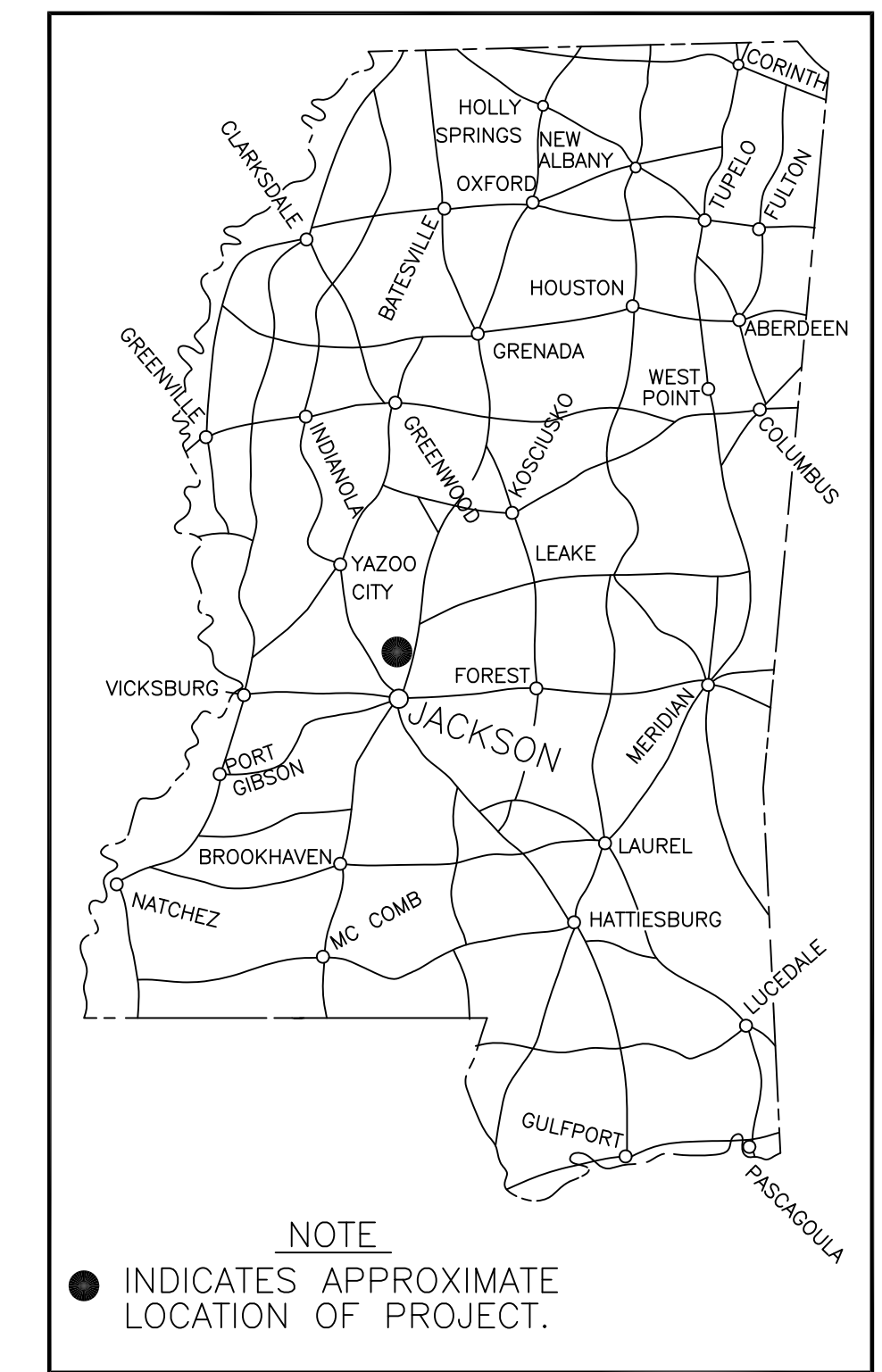


STA. 51+50.00  
 END OF PROJECT  
 SAP-45(10)M

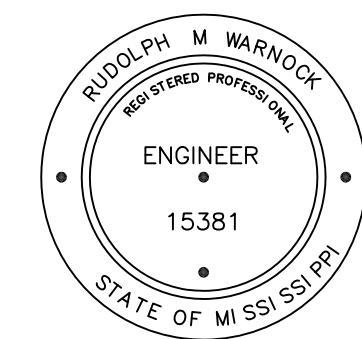
STA. 3+50.00  
 BEGINNING OF PROJECT  
 SAP-45(10)M

MISSISSIPPI STANDARD SPECIFICATIONS FOR STATE AID ROAD AND BRIDGE CONSTRUCTION CURRENTLY APPROVED BY THE OFFICE OF STATE AID ROAD CONSTRUCTION OF THE MISSISSIPPI DEPARTMENT OF TRANSPORTATION AND THE FEDERAL HIGHWAY ADMINISTRATION ARE MADE A PART HEREOF FULLY AND COMPLETELY AS IF ATTACHED HERETO, EXCEPT WHERE SUPERSEDED BY THE SPECIAL PROVISIONS, OR AMENDED BY REVISIONS.

INDEX  
 FOR INDEX SEE SHEET NO. 2



NOTE  
 ● INDICATES APPROXIMATE  
 LOCATION OF PROJECT.



PREPARED BY \_\_\_\_\_  
 COUNTY ENGINEER \_\_\_\_\_ DATE \_\_\_\_\_

OFFICE OF STATE AID ROAD CONSTRUCTION  
 MISSISSIPPI DEPARTMENT OF TRANSPORTATION  
 APPROVED

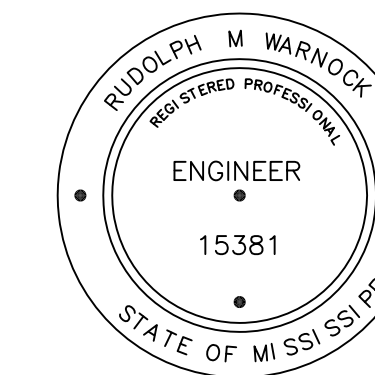
STATE AID ENGINEER \_\_\_\_\_ DATE \_\_\_\_\_

### SUMMARY OF QUANTITIES

PAY ITEM NO.	PAY ITEM	TOTAL QUANTITY		UNIT
		PLAN	FINAL	
	ROADWAY ITEMS			
S-200-A	MOBILIZATION	LUMP SUM		L.S.
S-202-D	REMOVAL OF ASPHALT (ALL DEPTHS)	562.5		S.Y.
S-203-A	UNCLASSIFIED EXCAVATION (FM)	562.5		C.Y.
S-304-A	GRANULAR MATERIAL (LVM) (CL. 5, GROUP C)	264.5		C.Y.
S-403-A	HOT MIX ASPHALT, ST, 9.5 MM	1,320.9		TON
S-403-A	HOT MIX ASPHALT, ST, 25.0 MM	185.6		TON
S-403-B	HOT MIX ASPHALT, ST, 9.5 MM, LEVELING	205.7		TON
S-618-A	MAINTENANCE OF TRAFFIC	LUMP SUM		L.S.
S-618-B	ADDITIONAL CONSTRUCTION SIGNS	0.0		S.F.
S-621-C	4" WIDE THERMOPLASTIC EDGE STRIPE (CONTINUOUS WHITE) (60 MILS)	1.782		MILE
S-621-E-2	4" WIDE THERMOPLASTIC TRAFFIC STRIPE (CONTINUOUS YELLOW) (90 MILS)	1.818		MILE
S-621-G-1	THERMOPLASTIC DETAIL STRIPE (4" EQUIVALENT LENGTH) (WHITE) (120 MILS)	808.0		L.F.
S-621-G-2	THERMOPLASTIC DETAIL STRIPE (4" EQUIVALENT LENGTH) (YELLOW) (120 MILS)	218.0		L.F.
S-621-H-1	THERMOPLASTIC LEGEND (WHITE) (120 MILS)	349.0		L.F.
S-627-K	RED-CLEAR REFLECTIVE HIGH PERFORMANCE RAISED MARKERS	32.0		EACH
S-627-L	TWO-WAY YELLOW REFLECTIVE HIGH PERFORMANCE RAISED MARKERS	120.0		EACH

①

① Required For Base Repair Excavation



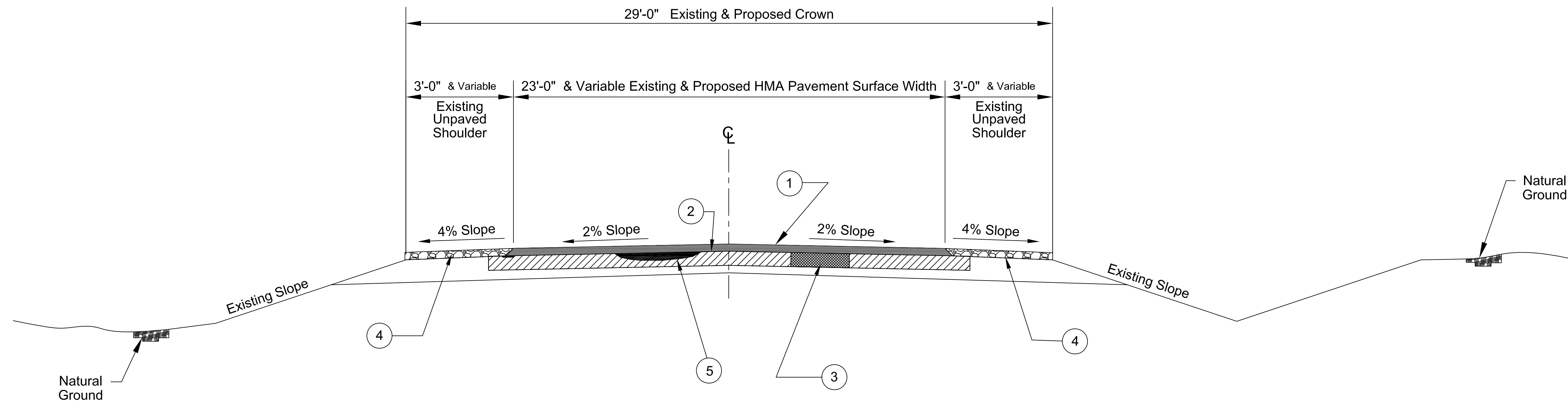
### INDEX

PREPARED BY: \_\_\_\_\_ COUNTY ENGINEER \_\_\_\_\_ DATE

SHEET NO.	TITLE
1	TITLE SHEET
2	QUANTITY & INDEX SHEET
2-A	TYPICAL SECTION SHEET
2-B	SCHEDULE SHEET
2-C	STRIPING DETAIL
2-D	TRAFFIC CONTROL PLAN
SA-PSM-1	PAVEMENT STRIPING & MARKING DETAILS
SDTCP-10	HIGHWAY SIGN AND BARRICADE DETAILS FOR CONSTRUCTION PROJECTS

**RATES OF APPLICATION USED FOR ESTIMATING QUANTITIES**

ITEM	RATE
Hot Mix Asphalt (ST, 9.5mm) OVERLAY	110 Lbs. Per Sq. Yd. /In.
Hot Mix Asphalt (ST, 25mm) BASE REPAIR	110 Lbs. Per Sq. Yd. /In.
Hot Mix Asphalt (ST, 9.5mm) LEVELING	110 Lbs. Per Sq. Yd. /In.
Granular Material For Shoulder (CLASS 5, GR. C) (LVM)	5.0 Cu. Yd./Station

**TYPICAL OVERLAY, LEVELING, & BASE REPAIR SECTION**

(STA. 3+50.00 TO STA. 51+50.00)

**GENERAL NOTES**

- Failed areas designated by the Engineer shall be under cut and backfilled with Hot Mix Asphalt, ST 25.0 mm, Base Course. Undercut material shall be disposed of by the Contractor outside of the project limits. The cost of excavation and disposal to be paid for as Unclassified Excavation FM, Pay Item S-203-A.
  - Tack coat required before placing Hot Mix Asphalt on edge repairs, base repairs, or leveling. Not a Pay Item. Cost to be included in other bid items.
  - Reconstruction in expansive clay subgrade sections with required muck excavation & borrow excavation shall be completed in locations as field-determined and As Directed By The Engineer. Contractor Shall Not cut out more than what can be backfilled and compacted before the end of the work day.
  - No cut-outs shall be left open & unbackfilled after working hours or overnight. Any hazardous condition or deficiency, As Determined By The Engineer, shall be corrected by the contractor prior to the end of the workday.
  - Shoulder material shall be trimmed from the edge of asphalt where necessary to provide adequate drainage from the roadway.
- 23'-0" & Variable x 1.5" HMA, ST, 9.5mm Surface Lift Required
  - Existing Pavement
  - Failed Areas Designated By The Engineer Shall Be Undercut To A 6" Minimum Depth And Repaired With HMA, ST, 25.0 mm. See SCHEDULE SHEET (Sheet No.2) For Locations.
  - Granular Material (Class 5, Group C) (LVM) Required For Shoulders
  - HMA, ST, 9.5mm Leveling Lift Required.
  - Cold Milling of Asphalt Pavement (See SCHEDULE SHEET) (Sheet No. 2) For Locations

TYPICAL SECTION SHEET

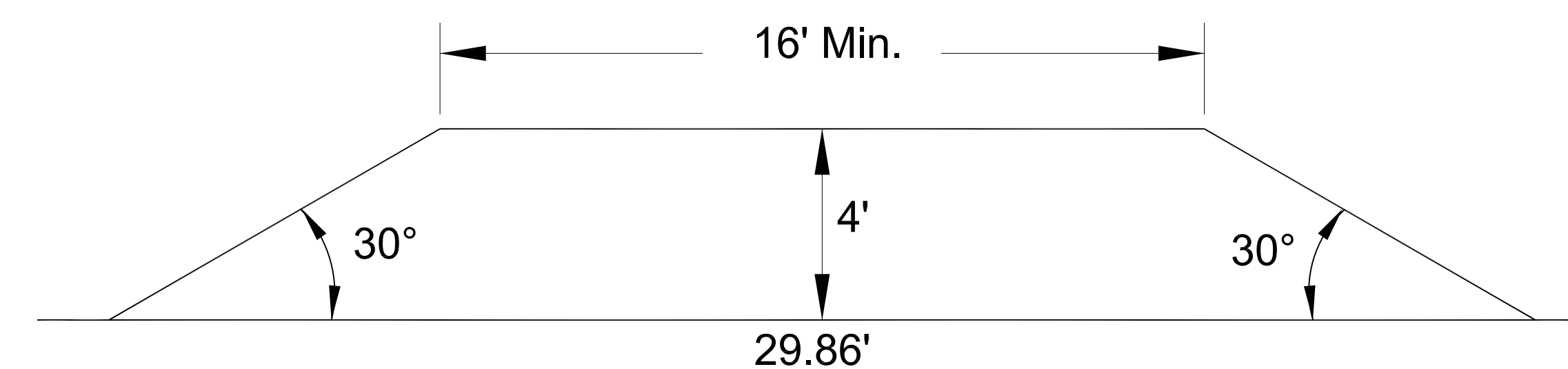
MADISON COUNTY SHEET NO. 2-A

RAMP SCHEDULE (ROADWAY TURNOUTS & INTERSECTIONS)			
STATION	DESCRIPTION	REMARKS	PAVED AREA (S.Y.)
5+40.00	COLONY CROSSING WAY	LT	142.2
19+38.00	CEDARMONT DR	LT	64.0
22+68.00	MANNSDALE RD	LT	121.6
30+58.00	DEVEREAUX DR	RT	71.6
49+92.00	COX CROSSING	LT	89.7
<b>TOTAL</b>			<b>489.1</b>

GRANULAR MATERIAL SCHEDULE	
AREA	GRANULAR MATERIAL (CL. 5, GROUP C) (LVM)
UNITS	CU. YDS.
ROADWAY	240.0
TURNOUTS	24.5
<b>TOTAL</b>	<b>264.50</b>

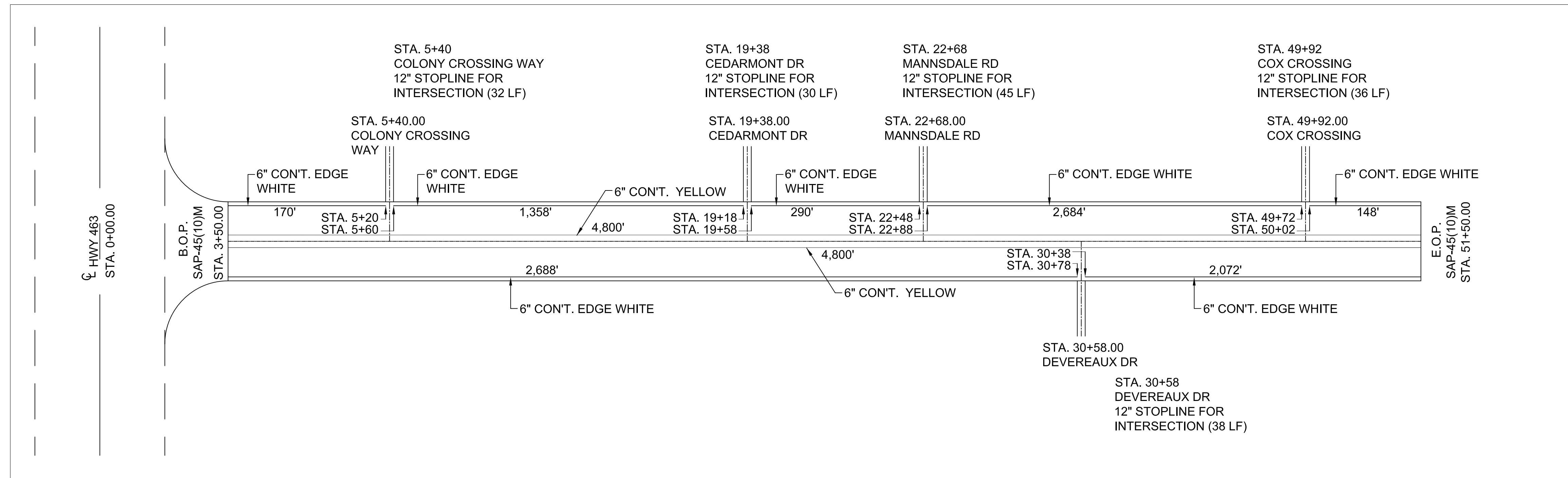
BASE REPAIR SCHEDULE								
STA. - STA.		SIDE	LENGTH	WIDTH	AREA	DEPTH	UNCLASSIFIED EXCAVATION (FM)	HOT MIX ASPHALT (HMA)
			FT.	FT.	SQ. FT.	IN.	CU. YD.	TON
49+25.00	51+50.00	BOTH	225.0	22.5	5,062.5	6.0	187.5	185.6
<b>TOTAL</b>			<b>225.0</b>		<b>5,062.5</b>		<b>187.5</b>	<b>185.6</b>

ESTIMATED ASPHALT SCHEDULE		
AREA	HOT MIX ASPHALT (HMA)	
	OVERLAY	BASE REPAIR
UNITS	TONS	TONS
ROADWAY	1,234.0	185.6
INTERSECTIONS & TURNOUTS	40.4	0.0
DRIVEWAYS/RAMPS	46.5	0.0
<b>TOTALS</b>	<b>1,320.9</b>	<b>185.6</b>



**TYPICAL PAVED APRON DETAIL**

10.20 SQ. YD. EXTRA AREA PER 16' RAMP  
 11.97 SQ. YD. EXTRA AREA PER 20' RAMP



**STRIPING DETAIL**

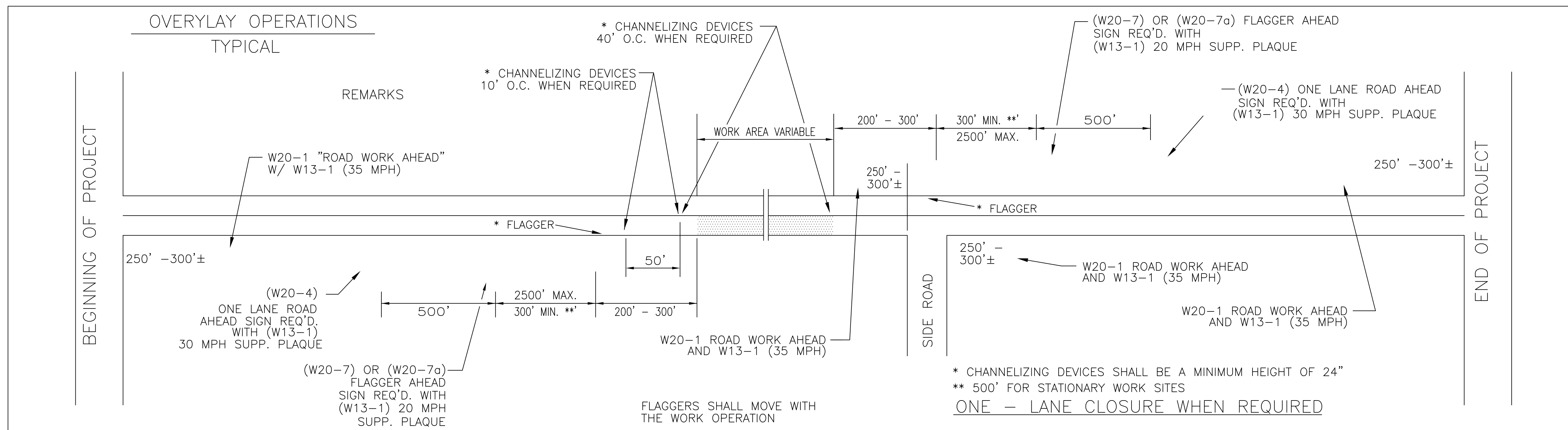
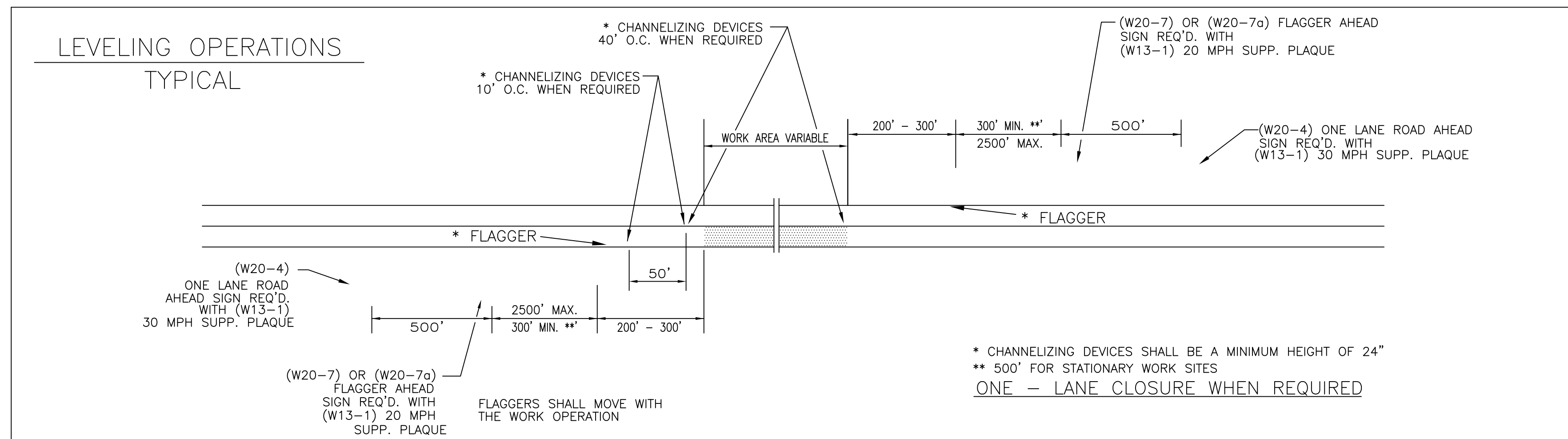
N.T.S.

85th Percentile Speed = 35 MPH  
 Minimum Passing Sight Distance = 550 Ft.

**NOTES**

1. Two-Way Yellow Reflective Raised Pavement Markers (Pay Item No. S-627-L) Shall Be Placed Throughout The Project Limits.
2. All Traffic Signs, Where Required, Shall Conform to the MUTCD (Latest Edition) Minimum Retroreflectivity Standards.

- 6" Thermoplastic Continuous White Edge Stripe = 1.782 Mi.
- 6" Thermoplastic Continuous Yellow Traffic Stripe = 1.818 Mi.
- Thermoplastic Legend (White) = 181.00 Lin. Ft.
- Thermoplastic Detail Stripe (4" Equiv. Length) (White) = 808.00 Lin. Ft.
- Thermoplastic Detail Stripe (4" Equiv. Length) (Yellow) = 218.00 Lin. Ft.
- Red-Clear Refl. Raised Pvmt. Mkrs. = 32.00 Ea.
- Two-Way Yellow Refl. Raised Pvmt. Mkrs. = 120.00 Ea.



NOTE: SIGNS ON THIS PLAN MAY BE PORTABLE AND SHALL BE CONSTRUCTED AND PLACED IN ACCORDANCE WITH THE M.U.T.C.D., LATEST EDITION.

**STRIPING OPERATIONS**

1. A SHADOW VEHICLE SHALL BE POSITIONED APPROXIMATELY 300 FEET IN FRONT OF AND BEHIND PAINTING OPERATIONS.
2. THE SHADOW VEHICLE SHALL CARRY SIGN "ROADWAY STRIPING AHEAD". BOTTOM OF SIGN SHALL BE A MINIMUM OF SIX (6) FEET ABOVE PAVEMENT.
3. A FLASHING YELLOW LIGHT SHALL BE INSTALLED ABOVE TOP OF WARNING SIGN.
4. A FLASHING YELLOW LIGHT SHALL BE INSTALLED ON ALL VEHICLES USED IN THE MARKING OPERATIONS.

**CONSTRUCTION NOTES**

1. "FLAGGER AHEAD" SIGNS AND FLAGGER WILL BE REQUIRED FOR THE SECTION OF ROADWAY THAT IS BEING UNDER CUT FOR RECONSTRUCTION
2. A "ROAD WORK AHEAD" SIGN (W20-1) WITH A 35 MPH (W13-1) ADVISORY SPEED PLAQUE MOUNTED ON A PORTABLE STAND WILL BE PLACED AT EACH END OF A ROAD AS IT IS BEING OVERLAYED, AND ON THE RIGHT HAND SIDE OF THE PROJECT ROAD ON EACH SIDE OF A MAJOR INTERSECTING ROAD.
3. DURING BASE REPAIR AND LEVELING OPERATIONS, ONE LANE WILL BE CLOSED TO TRAFFIC AS SHOWN BY THE "ONE LANE CLOSURE" DETAIL.

4. CONTRACTOR SHALL INSTALL TRAFFIC CONTROL DEVICES SUCH AS CONES, DRUMS, FLASHERS, BARRICADES, SIGNS, ETC. TO SAFELY CHANNEL OR DIRECT TRAFFIC. WHEN NECESSARY, FLAGGERS SHALL BE USED IN CONJUNCTION WITH TRAFFIC CONTROL DEVICES. (FLAGGER AHEAD SIGN REQUIRED IN ADVANCE OF FLAGGERS EXCEPT DURING BRIEF PERIODS AND EMERGENCY SITUATIONS.)

5. TRAFFIC CONTROL DEVICES SHALL BE INSTALLED WHENEVER NECESSARY, REMAIN IN PLACE AS LONG AS THEY ARE NEEDED, AND BE REMOVED IMMEDIATELY THEREAFTER.

6. TRAFFIC CONTROL DEVICES SHALL CONFORM TO APPLICABLE SPECIFICATION OF THE "MANUAL ON UNIFORM TRAFFIC CONTROL DEVICES" LATEST EDITION.

7. THESE ARE MINIMUM REQUIREMENTS AND IN NO WAY RELIEVE THE CONTRACTOR OF HIS OBLIGATION TO MAINTAIN TRAFFIC IN A SAFE MANNER.

8. SEE STANDARD DRAWINGS SDTCP-10 AND SA-TSP-1 FOR CORRECT PLACEMENT AND INSTALLATION OF BARRICADES AND SIGNS.

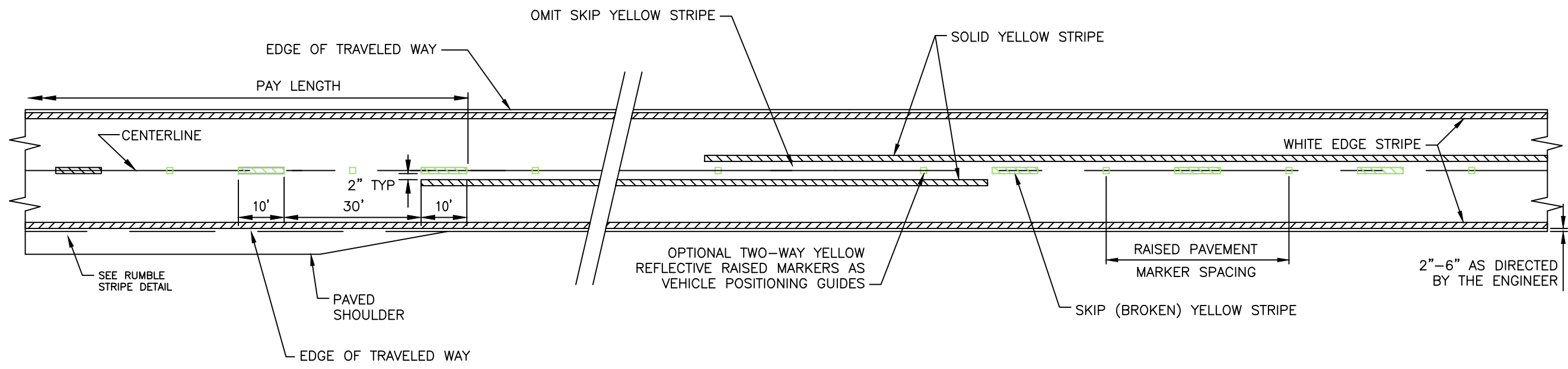
9. CONTRACTOR SHALL INSTALL ADVANCE WARNING SIGNS WHEN NECESSARY SUCH AS: WATCH FOR TRUCKS, TRUCKS TURNING, TRUCKS CROSSING, ETC. AND PLACE FLAGGERS AS DIRECTED BY THE COUNTY ENGINEER ALONG PUBLIC ROADS ON EACH SIDE OF BORROW PIT ENTRANCE OR CROSSING OF PUBLIC ROAD.

10. PAYMENT FOR INSTALLATIONS, MAINTENANCE, AND REMOVAL OF TRAFFIC CONTROL DEVICES WILL BE MADE UNDER PAY ITEM NOS. S-618-A AND S-618-B.

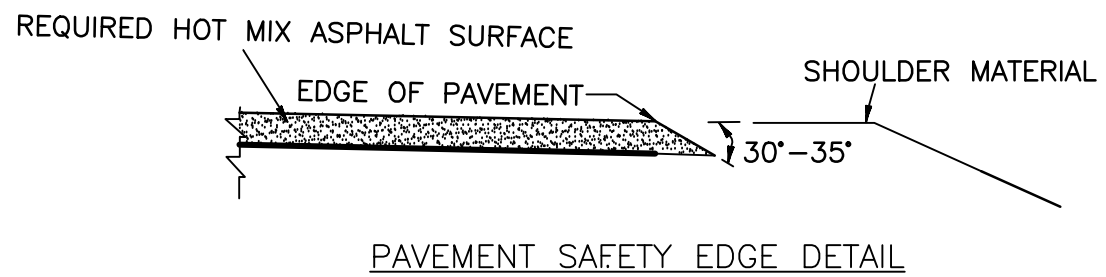
11. TEMPORARY RAISED PAVEMENT MARKERS SHALL BE REQUIRED AS PER SPECIAL PROVISIONS 901-S-619-2 AND 901-S-720-2 OF THE STANDARD SPECIFICATIONS. THE CONTRACTOR SHALL REPLACE RAISED PAVEMENT MARKERS AS NECESSARY. THE CONTRACTOR SHALL INCLUDE THE MATERIALS AND LABOR FOR INSTALLATION OF THE MARKERS IN THE MAINTENANCE OF TRAFFIC PAY ITEM NO. S-618-A. THERE SHALL BE NO SEPARATE PAY ITEM FOR THIS WORK. THE RAISED PAVEMENT MARKERS SHALL BE INSTALLED PRIOR TO APPLICATION OF THE SEAL COAT.

12. PRIOR TO THE OVERLAY PROCESS, "DO NOT PASS" (R4-1) OR "PASS WITH CARE" (R4-2) SIGNS SHALL BE INSTALLED ON THE RIGHT HAND SIDE OF THE ROAD AT THE BEGINNING AND END OF THE PROJECT AND THE BEGINNING AND THE END OF THE NO PASSING ZONES AND W14-3 SIGNS ON THE LEFT HAND SIDE OF THE ROADWAY, IN ACCORDANCE WITH THE PERMANENT STRIPING SCHEDULE IN THE PLANS. THESE SIGNS SHALL REMAIN IN PLACE UNTIL THE PERMANENT CENTERLINE STRIPING IS IN PLACE.

13. EXISTING TRAFFIC SIGNS SHALL REMAIN IN PLACE AND BE MAINTAINED BY THE CONTRACTOR UNTIL PROJECT IS COMPLETED AND PERMANENT SIGNS ARE INSTALLED UNLESS THE EXISTING SIGNS INTERFERE WITH AND/OR CONFLICT WITH CONSTRUCTION SIGNS. IF ANY EXISTING TRAFFIC SIGNS WITHIN THE PROJECT LIMITS ARE IN CONFLICT WITH PROJECT CONSTRUCTION, THEY SHALL BE RELOCATED SO AS TO SERVE THEIR ORIGINAL PURPOSE.



STRIPING DETAIL (TWO-WAY TRAFFIC)  
 ASPHALT OR CONCRETE PAVEMENT  
 (not to scale)



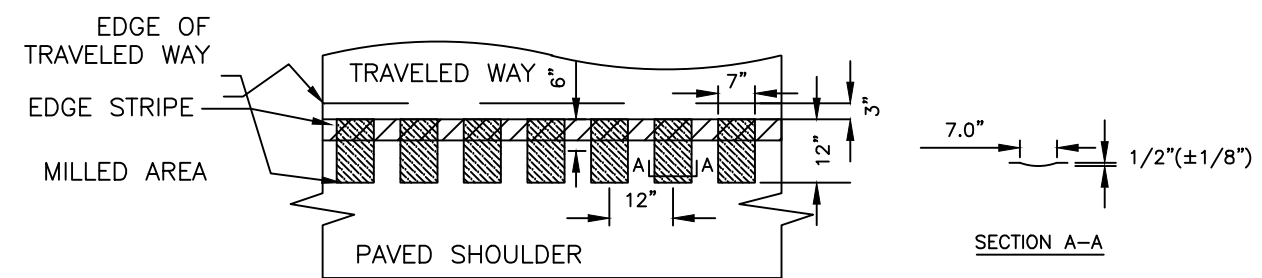
PASSING SIGHT DISTANCE SCHEDULE	
85TH-PERCENTILE OR POSTED OR STATUTORY SPEED LIMIT (MPH)	MINIMUM PASSING SIGHT DISTANCE (FEET)
25	450
30	500
35	550
40	600
50	800
60	1000

NOTES:  
 REFER TO STRIPING AND SIGNING SHEETS IN THE PLANS FOR STRIPE WIDTH AND REQUIRED STRIPING LOCATIONS IN ACCORDANCE WITH THE MANUAL ON UNIFORM TRAFFIC CONTROL DEVICES.

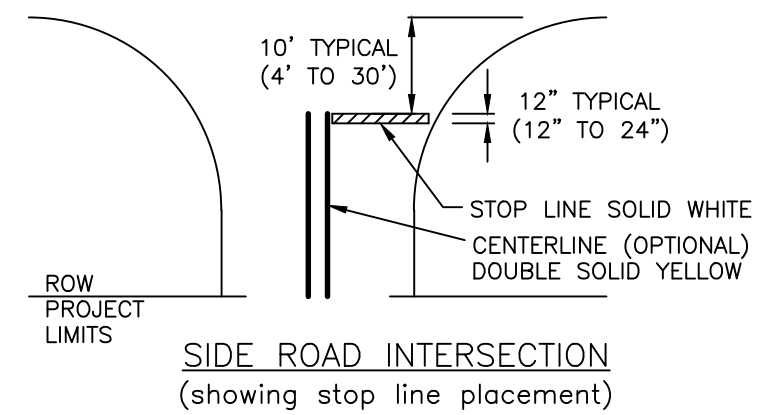
EDGE STRIPE SHALL BE OMITTED AT ALL TURNOUTS AND INTERSECTIONS, AND CONTINUED THROUGH ALL RAMPS AND DRIVEWAYS UNLESS SHOWN OTHERWISE ON THE PLANS. EDGE STRIPE SHALL BE THE SAME MATERIAL AS CENTERLINE STRIPE. CENTERLINE STRIPE ON CONCRETE PAVEMENT SHALL BE OFFSET 1" FROM PAVEMENT JOINT.

TYPICAL SPACING OF RAISED PAVEMENT MARKERS IS:

AREA	URBAN	RURAL
	TANGENT SECTIONS	
HORIZONTAL CURVES	40'	80'
	40'	40'

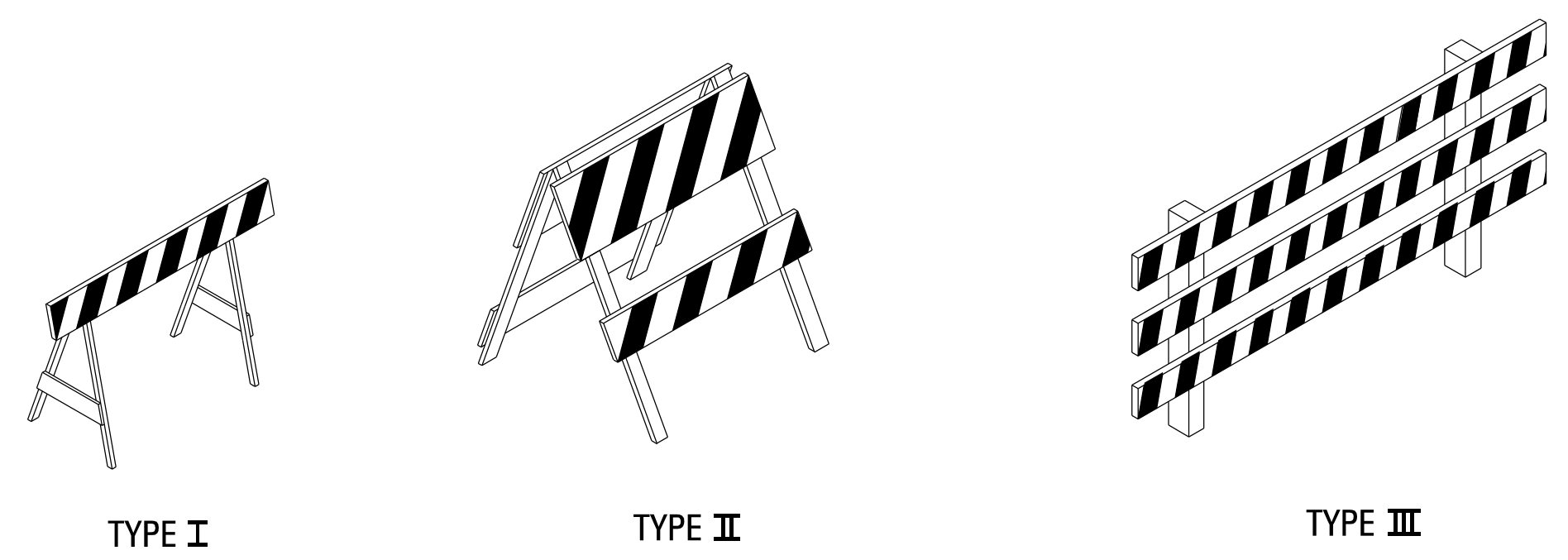


RUMBLE STRIPE DETAIL



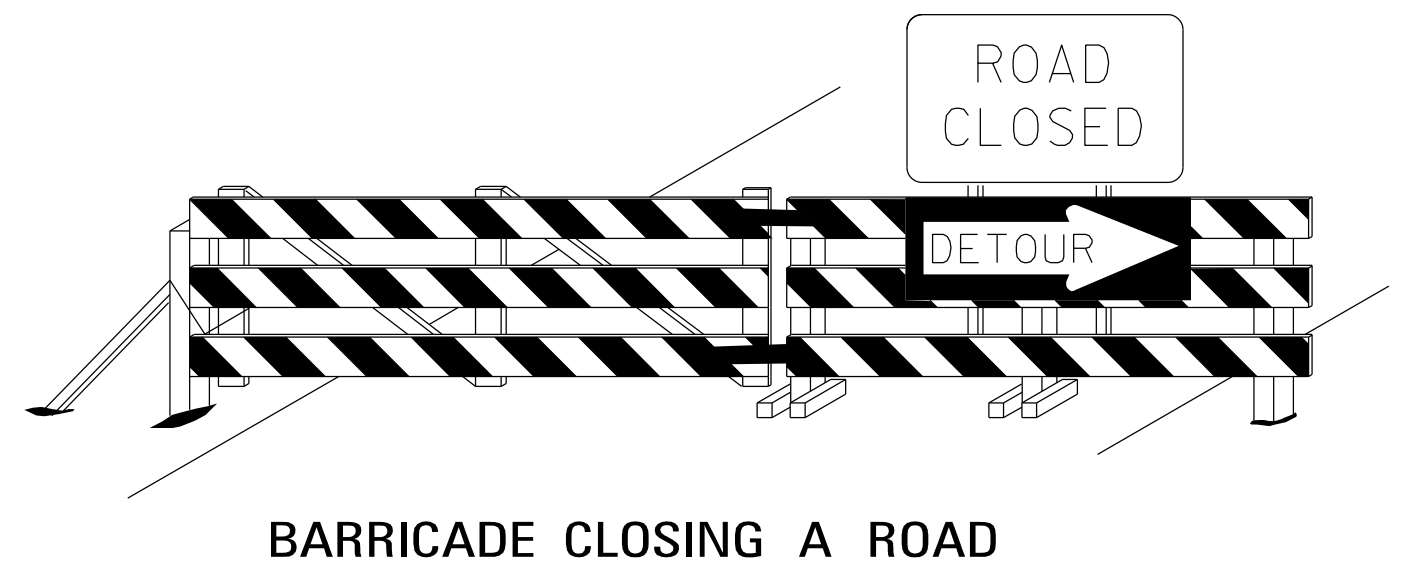
SIDE ROAD INTERSECTION  
 (showing stop line placement)

	HOW	BY	OFFICE OF STATE AID ROAD CONSTRUCTION MISSISSIPPI DEPARTMENT OF TRANSPORTATION
	ADD PAVEMENT SAFETY EDGE DETAIL	REVISION	<b>PAVEMENT STRIPING AND MARKING</b>
	DATE	DATE:	
	1/4/2013	JBM	MAY 20, 2005
			DRAWING NUMBER: SA-PSM-1



**STANDARD BARRICADES**

1. A TYPE I BARRICADE CONSISTS OF ONE (1) HORIZONTAL RAIL SUPPORTED BY A DEMOUNTABLE FRAME OR A LIGHT "A" FRAME. A TYPE I BARRICADE NORMALLY WOULD BE USED ON CONVENTIONAL ROADS OR URBAN STREETS AND ARTERIALS.
2. A TYPE II BARRICADE CONSISTS OF TWO (2) HORIZONTAL RAILS ON A LIGHT "A" FRAME. TYPE II BARRICADES ARE INTENDED FOR USE ON EXPRESSWAYS AND FREEWAYS AND OTHER HIGH-SPEED ROADWAYS.
3. TYPE I AND TYPE II BARRICADES ARE INTENDED FOR USE WHERE THE HAZARD IS RELATIVELY SMALL AS, FOR EXAMPLE, ON CITY STREETS, OR FOR THE MORE OR LESS CONTINUOUS DELIMITING OF A RESTRICTED ROADWAY, OR FOR TEMPORARY DAYTIME USE.
4. A TYPE III BARRICADE CONSISTS OF THREE (3) HORIZONTAL RAILS SUPPORTED BY FIXED POSTS, A RIGID SKID, A HEAVY DEMOUNTABLE FRAME OR A HEAVY, HINGED "A" FRAME.
5. TYPE III BARRICADES ARE INTENDED FOR USE ON CONSTRUCTION AND MAINTENANCE PROJECTS AS WING BARRICADES AND AT ROAD CLOSURES, WHERE THEY MUST REMAIN IN PLACE FOR EXTENDED PERIODS.
6. THE MARKING FOR BARRICADE RAILS SHALL BE ORANGE AND WHITE (SLOPING DOWNWARD AT AN ANGLE OF 45° IN THE DIRECTION TRAFFIC IS TO PASS).
7. DO NOT PLACE SANDBAGS OR OTHER DEVICES TO PROVIDE MASS ON THE BOTTOM RAIL THAT WILL BLOCK VIEW OR RAIL FACE.
8. FOR ADDITIONAL INFORMATION OR DETAILS, SEE MUTCD, LATEST EDITION.
9. BARRICADES ARE CLASSIFIED BY FHWA AS CATEGORY II WORK ZONE DEVICES WHICH REQUIRE CRASHWORTHINESS ACCEPTANCE LETTERS. TO DATE, 2-IN. THICK TIMBER RAILS HAVE NOT BEEN SUCCESSFULLY CRASH TESTED. A LIST OF CRASHWORTHY BARRICADES AND OTHER CATEGORY II DEVICES CAN BE FOUND ON FHWA'S WEBSITE: [http://safety.fhwa.dot.gov/roadway\\_dept/policy\\_guide/road\\_hardware/cat2.cfm](http://safety.fhwa.dot.gov/roadway_dept/policy_guide/road_hardware/cat2.cfm)

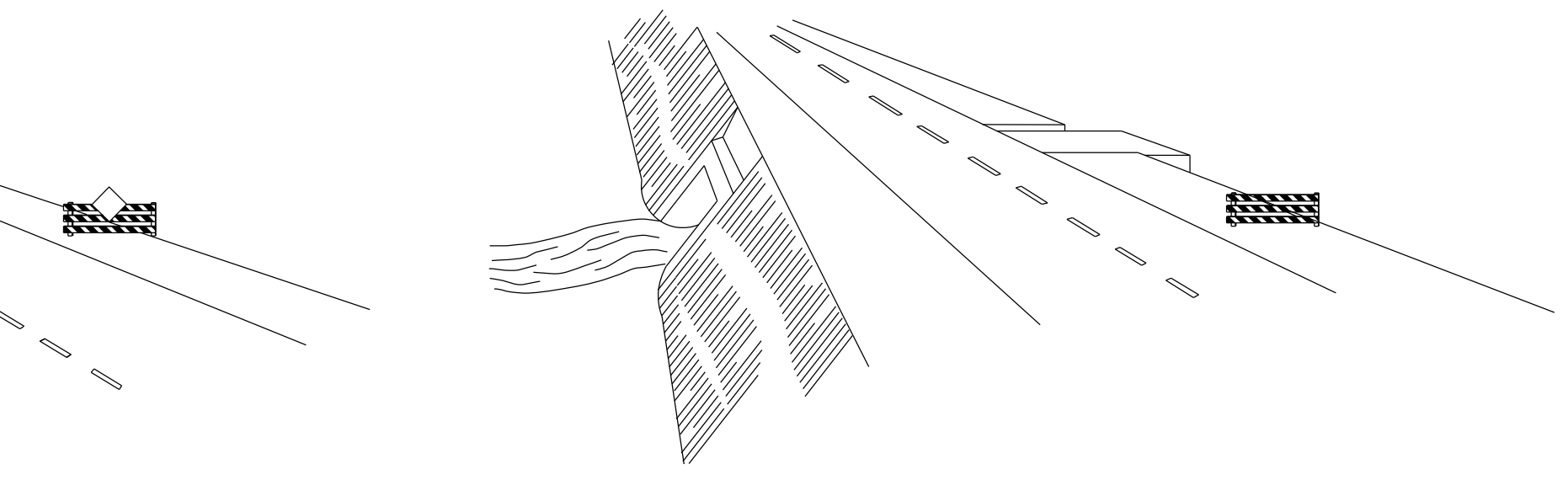


**BARRICADE CLOSING A ROAD**

**BARRICADE CHARACTERISTICS**

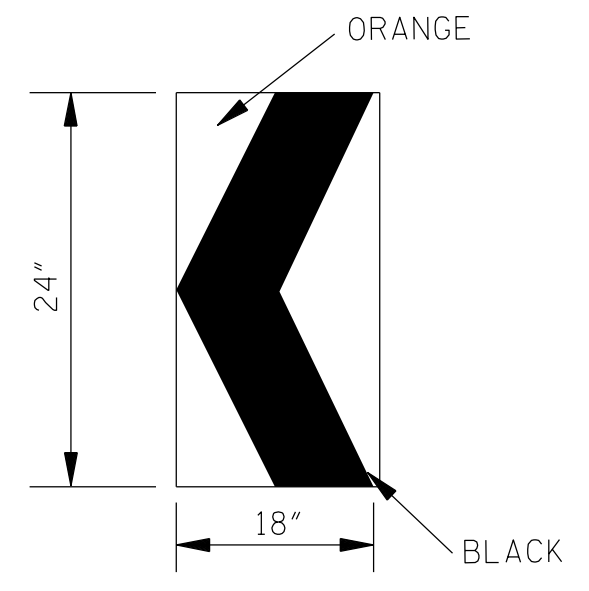
	<b>I</b>	<b>II</b>	<b>III</b>
WIDTH OF RAIL **	8" MIN. - 12" MAX.	8" MIN. - 12" MAX.	8" MIN. - 12" MAX.
LENGTH OF RAIL **	24" MIN.	24" MIN.	48" MIN.
WIDTH OF STRIPE *	6"	6"	6"
HEIGHT	36" MIN.	36" MIN.	60" MIN.
NUMBER OF REFLECTORIZED RAIL FACES	2 (ONE EACH DIRECTION)	4 (TWO EACH DIRECTION)	3 IF FACING TRAFFIC IN ONE DIRECTION 6 IF FACING TRAFFIC IN TWO DIRECTIONS
TYPE OF FRAME	LIGHT	LIGHT "A" FRAME	POST OR SKID

- \* 1. FOR RAILS LESS THAN 36" LONG, 4" WIDE STRIPES MAY BE USED.
- \*\* 2. BARRICADES INTENDED FOR USE ON EXPRESSWAYS, FREEWAYS AND OTHER HIGH SPEED ROADWAYS, SHALL HAVE A MINIMUM OF 270 in<sup>2</sup> OF REFLECTIVE AREA FACING TRAFFIC.



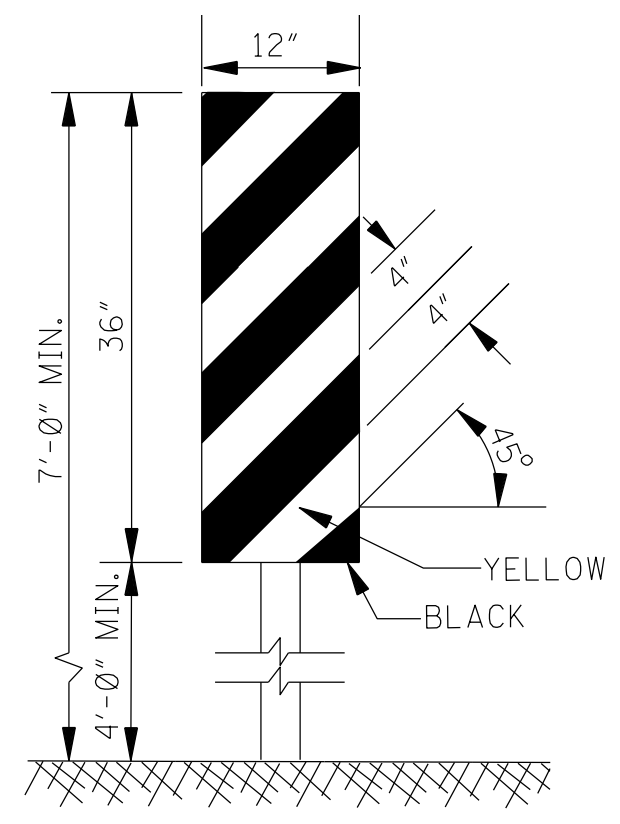
**WING BARRICADES**

1. WING BARRICADES ARE TYPE III BARRICADES ERECTED ON THE SHOULDER ON ONE OR BOTH SIDES OF THE PAVEMENT TO GIVE THE SENSATION OF A NARROWING OR RESTRICTED ROADWAY. WING BARRICADES MAY BE USED AS A MOUNTING FOR THE ADVANCE WARNING SIGNS OR FLASHERS.
2. WING BARRICADES SHOULD BE USED:
  - A. IN ADVANCE OF A CONSTRUCTION PROJECT EVEN WHEN NO PART OF THE ROADWAY IS ACTUALLY CLOSED.
  - B. IN ADVANCE OF ALL BRIDGE OR CULVERT WIDENING OPERATIONS.



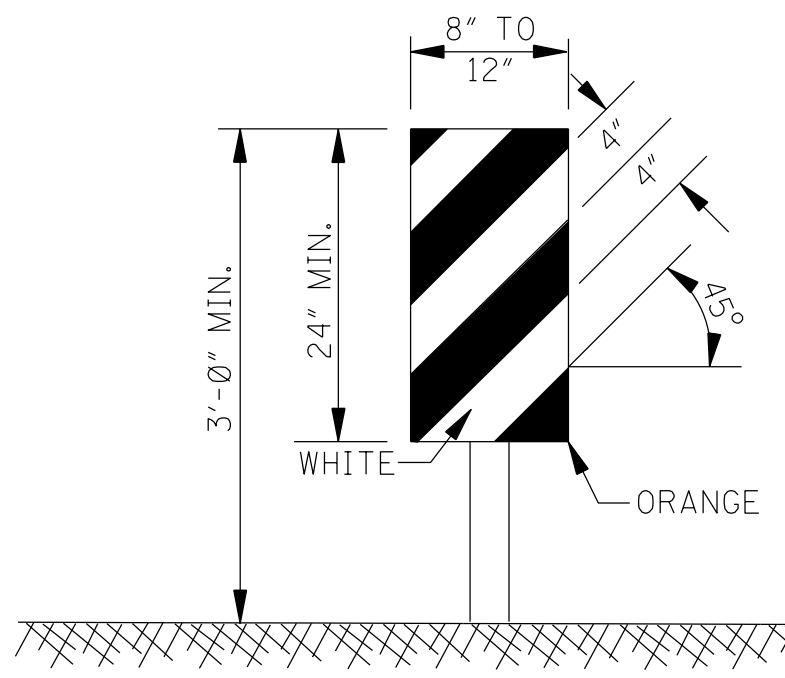
**CHEVRON SIGN DETAIL**

1. A CHEVRON SIGN CONSISTS OF A BLACK CHEVRON TYPE MARKING ON AN ORANGE BACKGROUND AND SHALL POINT IN THE DIRECTION OF TRAFFIC FLOW.
2. THE CHEVRON SIGN SHALL BE MOUNTED ON FIXED POST OR RIGID SKID.
3. CHEVRON SIGNS MAY BE USED TO SUPPLEMENT OTHER STANDARD DEVICES WHERE ONE OR MORE LANES ARE CLOSED FOR CONSTRUCTION OR MAINTENANCE. THEY SHALL BE PLACED APPROXIMATELY 2'-0" BEHIND THE LANE TRANSITION STRIPE.



**TYPE 3 OBJECT MARKER (OM-3R)**

1. TYPE 3 OBJECT MARKERS SHALL BE USED AT ALL EXPOSED BRIDGE ABUTMENTS AND AT OTHER LOCATIONS AS DEEMED NECESSARY BY THE ENGINEER.
2. THE OM-3R IS SHOWN. THE OM-3L IS SIMILAR EXCEPT THE STRIPES SLOPE DOWNWARD FROM THE UPPER LEFT SIDE TO THE LOWER RIGHT SIDE AND SHALL BE PLACED ON THE LEFT SIDE OF THE OBJECT.
3. THE INSIDE EDGE OF THE MARKER SHALL BE IN LINE WITH THE INNER EDGE OF THE OBSTRUCTION.

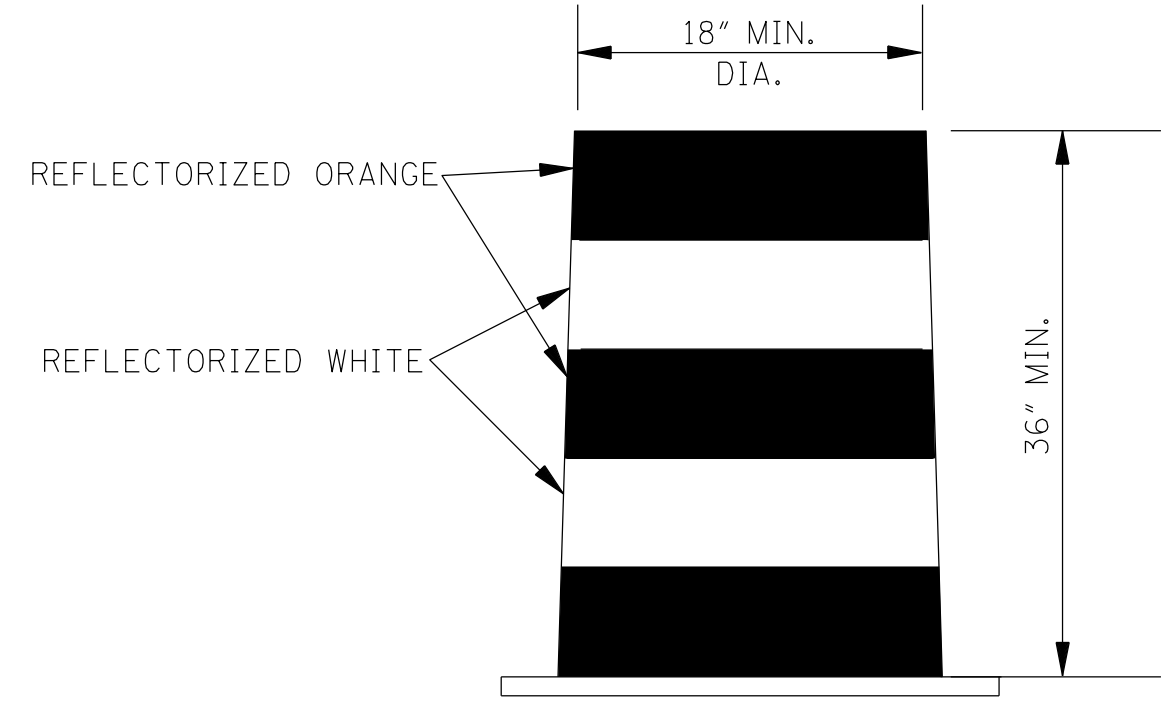


**VERTICAL PANEL**

1. VERTICAL PANELS CONSIST OF AT LEAST ONE PANEL 8" TO 12" IN WIDTH AND A MINIMUM OF 24" IN HEIGHT.
2. THE DIAGONAL STRIPES SHALL SLOPE DOWNWARD IN THE DIRECTION THAT TRAFFIC IS TO PASS THE PANEL. THE PANELS SHALL BE MOUNTED WITH THE TOP A MINIMUM OF 36" ABOVE THE ROADWAY ON A SINGLE LIGHTMASS POST.
3. VERTICAL PANELS USED ON EXPRESSWAYS, FREEWAYS AND OTHER HIGH-SPEED ROADWAYS SHALL HAVE A MINIMUM OF 270 in<sup>2</sup> OF RETROREFLECTIVE AREA FACING TRAFFIC.
4. FOR TWO-WAY TRAFFIC OPERATIONS, BACK-TO-BACK PANELS SHALL BE USED.

**GENERAL NOTES:**

1. MARKINGS ON ALL DEVICES SHOWN ON THIS SHEET SHALL BE HIGH INTENSITY REFLECTIVE SHEETING.
2. THE TRAFFIC CONTROL PLAN WILL LIST THE VARIOUS TRAFFIC CONTROL DEVICES REQUIRED FOR EACH PROJECT.



**PLASTIC DRUM STRIPING DETAIL**

1. PLASTIC DRUMS SHALL BE ON END AND USED AS AN EXPEDIENT METHOD FOR TRAFFIC CHANNELIZATION. THE COLOR AND MARKING OF DRUMS SHALL BE CONSISTENT WITH MARKING STANDARDS FOR BARRICADE. THE PREDOMINANT COLOR ON DRUMS SHALL BE ORANGE WITH FOUR (4) REFLECTORIZED, HORIZONTAL, CIRCUMFERENTIAL STRIPES (2 ORANGE & 2 WHITE) 6" WIDE.
2. DRUMS SHOULD NEVER BE PLACED IN THE ROADWAY WITHOUT WARNING SIGNS.
3. WHERE PRACTICAL PLASTIC DRUMS SHALL BE PLACED NO CLOSER THAN 3'-0" FROM THE EDGE OF TRAVELED LANE.

BY		MISSISSIPPI DEPARTMENT OF TRANSPORTATION	
REVISION		<p align="center"><b>HIGHWAY SIGN AND BARRICADE DETAILS FOR CONSTRUCTION PROJECTS</b></p>	
DATE			
ISSUE DATE:		10-04-2011	



WORKING NUMBER  
SDTCP-10  
SHEET NUMBER



**BIDDER CHECK LIST FOR STATE FUNDED PROJECTS**

(Items requiring completion and/or signature at bid letting)

- \_\_\_\_\_ Envelope has required information on outside and is sealed. (See Subsection S-102.01 and S-102.09)
- \_\_\_\_\_ Affidavit regarding Non-Collusion, Debarment and Suspension, etc. : executed (signed and notarized) in **duplicate**.
- \_\_\_\_\_ EEV Certification (Notice to Bidders No. 14)
- \_\_\_\_\_ Section 902 Proposal - Complete the following:
- \_\_\_\_\_ Bid sheets : unit prices and item totals, subtotals and project totals, etc. entered.
- \_\_\_\_\_ Combination Bid Proposal of Section 902, where applicable: completed and signed for each project which is to be considered in combination. (See Subsection S-102.11)
- \_\_\_\_\_ Section 902 Proposal, page 3 : completed and signed.
- \_\_\_\_\_ Proposal Guaranty (Bid Bond) : attached. (See Subsection S-103.05)
- \_\_\_\_\_ Any issued addenda included and acknowledged as required.
- \_\_\_\_\_ Non-resident Bidders: ON STATE FUNDED PROJECTS ONLY, a copy of the current laws regarding any preference for local Contractors from State wherein domiciled have been included. (See Subsection S-103.01)

**DO NOT** remove any part of the contract documents. A stripped proposal is considered as an irregular bid and will be cause for rejection.

*This checklist is to assist the contractor in the submission of a complete Bid Proposal. This checklist in no way relieves the contractor of the responsibility to submit a complete Proposal. Failure to complete any or all of the applicable requirements will be cause for the proposal to be considered irregular.*

OFFICE OF STATE AID ROAD CONSTRUCTION  
MISSISSIPPI DEPARTMENT OF TRANSPORTATION

(07-31-2012)

STATE AID PROJECT NO. SAP- 45(10)M  
MADISON COUNTY

MISSISSIPPI STANDARD SPECIFICATIONS FOR STATE AID ROAD AND BRIDGE  
CONSTRUCTION, 2004 EDITION  
TABLE OF CONTENTS

Section 900	Notice of Advertisement
Special Notice to Bidders	Construction Safety & Health Standards
Notice To Bidder No. 1	Bidding Requirements and Conditions
Notice To Bidder No. 2	High Voltage Overhead Lines
Notice To Bidders No. 3	Specialty Items
Notice To Bidder No. 5	Status of Utility Adjustments and Right-of-Way Acquisition
Notice To Bidders No. 5-LSBP	Status of Utility Adjustments And Right-of-Way Acquisition
Notice To Bidders No. 6	Petroleum Products Base Prices for Contract
Notice To Bidders No. 7	Payments To Subcontractors (With OCR-484-SA)
Notice To Bidders No. 8 (Rev. 11-08-2011)	Errata and Modifications to the 2004 Edition of the Standard Specifications for State Aid Road and Bridge Construction
Notice To Bidders No. 10	Monthly Estimate Retainage
Notice To Bidders No. 11(Rev.11-19-2009)	Certification of 100% of Payment To Subcontractor
Notice To Bidders No. 12	Fiber Reinforced Concrete
Notice To Bidders No. 13	Railroads and Contractor Responsibilities
Notice To Bidders No. 15(Rev. 03-17-2010)	Hot Mix Asphalt Pavement Safety Edge
Notice To Bidders No. 16	Safety Apparel
SS 901-S-102-1	Bid Bond Agent
SS 901-S-103-1	Contract Bond Agent or Liability Insurance Agent
SS 901-S-104-1	Removal and Disposal of Structures and Obstructions
SP 901-S-107-1	Storm Water Pollution Prevention Plan
SS 901-S-107-2	Material Pits and Quarries
SS 901-S-107-3	Permits, Licenses and Taxes
SS 901-S-212-1	Agricultural Limestone
SP 901-S-401-2	Plant Mix Pavements (HMA)--General Marshall Design Mixtures
SS 901-S-412-1	Bituminous Fog Seal
SS 901-S-423-1	Ground-In Rumble Strips
SP 901-S-618-1	Supplement To Traffic Control Plan
SS 901-S-701-2	Portland Cement
SS 901-S-707-2	Joint Materials
SS 901-S-708-1	Non-METAL Drainage Structures
SS 901-S-711-2	Synthetic Structural Fiber Reinforcement
SS 901-S-714-1	Geotextile Certification
SS 901-S-714-2	Miscellaneous Materials
SS 901-S-715-2	Agricultural Limestone
SS 901-S-803-1	LRFD Driven Pile Specifications
SS 901-S-804-1	Concrete Bridges And Structures
Form SAA-1	Non-Collusion Affidavit
EEV Certification (Rev. 06-12)	Mississippi Employment Protection Act Compliance
Section 902	Proposal
Section 903 (Rev. 03-11-2010)	Contract
Section 904 (Rev. 03-11-2010)	Contract Bond

**OFFICE OF STATE AID ROAD CONSTRUCTION  
MISSISSIPPI DEPARTMENT OF TRANSPORTATION**

NOTICE TO BIDDERS NO. 1

DATE: July 1, 2005

SUBJECT: BIDDING REQUIREMENTS AND CONDITIONS

REFERENCE: Section S-102.02 of 2004 Edition of the Standard Specifications for Road and Bridge Construction

NOTICE TO BIDDERS  
(ALL PROJECTS)

The current (2004) Edition of the Mississippi Standard Specifications for State Aid Road and Bridge Construction adopted by this Office on July 1, 2005, and approved by the Federal Highway Administration on July 1, 2005 is made a part hereof fully and completely as if it were attached hereto, except where superseded by special provisions, or amended by revisions of the Specifications contained herein. Copies of the specification book may be purchased from the Office of State Aid Road Construction.

A reference in any contract document to controlling requirements in another portion of the contract documents shall be understood to apply equally to any revision or amendment thereof included in the contract.

In the event the plans or proposal inadvertently contain references to the 1982 or 1989 Edition of the Mississippi Standard Specifications for State Aid Road and Bridge Construction, it is to be understood that such references shall mean the comparable provisions of the 2004 Edition of the Standard Specifications.

NOTICE TO BIDDERS  
(FEDERAL AID PROJECTS)

The Contractor and sub-contractors shall submit one copy each of FORMS CAD-880, "Weekly Summary of Wage Rates" and CAD-881, "Weekly Statement of Compliance" each week to the State Aid Engineer and to the County Engineer. The Contractor and sub-contractors may at their discretion, submit two (2) copies of each form to the County Engineer, who in turn, shall forward one copy to State Aid. The forms may be obtained from:

Office Supervisor  
Office of State Aid Road Construction  
P.O. Box 1850  
Jackson, Mississippi 39215-1850

OFFICE OF STATE AID ROAD CONSTRUCTION  
MISSISSIPPI DEPARTMENT OF TRANSPORTATION

NOTICE TO BIDDERS NO. 2

DATE: July 1, 2004

SUBJECT: HIGH VOLTAGE OVERHEAD LINES

NOTICE OF WORK TO BE PERFORMED  
IN PROXIMITY OF HIGH VOLTAGE POWER LINES

In accordance with Section 45-15-1, et seq., Mississippi Code of 1972 (as amended effective July 1, 1988), \_\_\_\_\_ (herein after referred to as "Applicant") (Supervisor in Charge: \_\_\_\_\_), whose address is \_\_\_\_\_, and whose telephone number is \_\_\_\_\_, hereby gives notice to the electric utility (hereinafter referred to as "Utility") that Applicant will be performing functions or activities at the location of \_\_\_\_\_

\_\_\_\_\_ and that the estimated starting date of this work is \_\_\_\_\_. This work could reasonably be expected to cause persons, equipment or parts of tools or materials to be brought within ten (10) feet of Utility's high voltage lines at the proposed work area. Applicant hereby requests the Utility to confer with Applicant or his representative at the work site to ascertain the type of work activity that will take place and if further safety measures need to be taken by either the Applicant or the Utility. The Utility will give the Applicant a written cost estimate for safety arrangements to deter contact with on-site power lines. Applicant agrees not to perform such functions or activities until mutually satisfactory arrangements as provided by Section 45-15-9 have been made to deter contact with Utility's line.

Nothing contained in this Notice shall diminish or affect the obligation imposed upon the Utility under Section 45-15-1, et seq., or under existing laws or be construed as a waiver of the Applicant's or the Utility's rights under the law.

NOTICE GIVEN THIS, the \_\_\_\_\_ day of \_\_\_\_\_, \_\_\_\_\_.

\_\_\_\_\_  
APPLICANT

BY: \_\_\_\_\_

\_\_\_\_\_  
(Title)

Notice received by the Utility this the \_\_\_\_\_ day of \_\_\_\_\_, \_\_\_\_\_.

**OFFICE OF STATE AID ROAD CONSTRUCTION  
MISSISSIPPI DEPARTMENT OF TRANSPORTATION**

NOTICE TO BIDDERS NO. 3

DATE: \_\_\_\_\_

SUBJECT: SPECIALTY ITEMS

PROJECT: \_\_\_\_\_ COUNTY \_\_\_\_\_

Pursuant to the provisions of Section S-108 of the Mississippi Standard Specifications for State Aid Road and Bridge Construction, 2004 Edition, the following work items are hereby designated as "Specialty Items" for this contract.

<u>Pay Item No.</u>	<u>Description</u>
_____	_____
_____	_____
_____	_____
_____	_____
_____	_____
_____	_____
_____	_____
_____	_____
_____	_____
_____	_____
_____	_____
_____	_____
_____	_____
_____	_____
_____	_____
_____	_____

**OFFICE OF STATE AID ROAD CONSTRUCTION  
MISSISSIPPI DEPARTMENT OF TRANSPORTATION**

NOTICE TO BIDDERS NO. 5

DATE: \_\_\_\_\_

**SUBJECT: STATUS OF UTILITY ADJUSTMENT AND RIGHT-OF-WAY  
ACQUISITION**

I. All known utilities within the construction limits of this project are shown on the plans. The owners and addresses of these utilities are as follows:

- 1.
- 2.
- 3.
- 4.

The Status of the adjustment of each of the utilities is as follows:

- 1.
- 2.
- 3.
- 4.

Subsection S-105.06 of the 2004 Edition of the Standard Specifications provides for cooperation between the Contractor and Owner of utilities. All utility agreements are available for inspection by the Contractor in the Chancery Clerk's office. Additional assistance may be obtained by contacting the following:

**MISSISSIPPI ONE-CALL CENTER  
BEFORE YOU DIG CALL:  
MS 1-800-227-6477 - JACKSON 362-4374  
OUT-OF-STATE 1-800-445-1988**

II. \_\_\_\_\_ County has certified to the Office of State Aid Road Construction that it has title to all rights-of-way within the limits shown on the plans for this project.

**OFFICE OF STATE AID ROAD CONSTRUCTION  
MISSISSIPPI DEPARTMENT OF TRANSPORTATION**

**NOTICE TO BIDDERS NO. 7**

**DATE: July 1, 2004**

**SUBJECT: PAYMENTS TO SUBCONTRACTORS**

Bidders are hereby advised that each month, the Contractor will submit to the County/LSBP Engineer form OCR-484-SA certifying payments to all subcontractors. Form OCR-484-SA can be obtained from the Office Of State Aid Road Construction, MDOT Lab Building, 412 Woodrow Wilson Avenue, Jackson, MS, or on the State Aid website (<http://www.osarc.state.ms.us>) under Documents->Forms->State Aid Forms.

<u>Page</u>	<u>Subsection</u>	<u>Change</u>
3-30	S-308.15	In the third pay item, change "per square yard**" to "per square yard". In the fourth pay item, change " <u>S-308-B-1</u> " to " <u>S-308-B-2</u> ".
<u>4-8</u>	<u>S-401.02.4</u>	At the end of the third sentence, delete the "." and add "and as a base course."
4-8	S-401.02.4	In the table at the end of the Subsection, for the 19 mm, change "2 ¼" to "2 ½" in the Minimum and change "3" to "3 ½" in the Maximum; for the 12.5 mm, change "2" to "2 ½" in the Maximum; for the 9.5 mm, change "1 ½" to "2" in the Maximum; and for the 4.75 mm, change "¾" to "1 ¼" in the Maximum.
4-23	S-401.03.1.4	In the first paragraph, change "92.0 percent" to "the specified percentage (92.0 or 93.0)".
4-32	S-403.03.3	In the first sentence of the second paragraph, change "acceptance and pavement" to "acceptance and payment".
4-45	S-409.02.2	Change "PG 64-22" to "PG 67-22".
6-2	S-601.06	In the first sentence, change "S-804.03" to "S-804.03.5".
6-7	S-602.05	Change the subsection reference for Bending from "S-805.05" to "S-805.03.2".
6-9	S-603.02	Change the subsection reference for Joint Mortar from "707.02" to "714.11".
<u>6-15</u>	<u>S-603.09</u>	After second sentence, add "All lift holes shall be filled and/or sealed to the satisfaction of the Engineer."
6-78	S-620.06	Change the first sentence of the second paragraph, from "Legend will be measured by the square foot.", to "Legend will be measured by the linear foot or square foot, as applicable."
6-78	S-620.07	In the sixth pay item, change "S-620-E-1" to "S-620-E-2".
7-17	S-702.12	In TABLE I, under the heading of Test, in the second line change "140°F, poises" to "275°F, C <sub>s</sub> ".
7-20	S-703.02.1	In line (1) of the first paragraph, change "set-out" to "set out".
7-25	S-703.04.2	In the fifth paragraph, delete "S-703.04.3 and".
7-52	S-708.02.1.2	In the first sentence change "20 percent" to "25%".
7-104	S-714.13.1	Delete the fourth paragraph.
7-154	S-721.02.3.7	Delete Subsection S-721.02.3.7--Ground Plates in toto.
8-37	S-803.03.2.6	In the first sentence of the second paragraph, change "S-803.03.1.5.1" to "S-803.03.2.5".
8-45	S-803.04.1	Delete the second paragraph and replace with the following:  Test piles which require extensions or building up will not be measured for additional payment. Splices required for the extensions will not be measured for payment.



<u>Page</u>	<u>Subsection</u>	<u>Change</u>
		No measurement for payment will be made for cut-off of a test pile.
8-50	S-803	Under <u>COMPENSATION</u> , In the seventh pay item, change " <u>S-803-G: Blank</u> " to " <u>S-803-G: Concrete Piling Cut-off, Size</u> - per each "
8-60	S-804.02.11	In the last sentence of the first paragraph, change "automatically" to "automatic".
8-64	S-804.02.13	In the second line of paragraph (c), place a period after psi and delete "provided both the QC and QA test results are equal to or exceed the minimum compressive strength requirements."
8-66	S-804.02.13.1.3	In the last sentence change, "S-804.02.13.1" to "S-804.02.12".
8-67	S-804.02.13.1.5	Change the equation for % Reduction to:
		$\% \text{ Reduction} = \frac{(f'_c - X)}{f'_c} \times 100$
8-121	S-806.04	In the first sentence of the third paragraph, change "by the unit (one unit consists of one wing on each side and end of the abutment cap)" to "per each".
8-121	S-806.08	Change " <u>S-806.08--Basis of Payment.</u> " to " <u>S-806.05--Basis of Payment.</u> "
8-122	S-806.08	In the first pay item, change " _ ' Interior" to " ___ ' Interior".
<u>8-122</u>	<u>S-806.08</u>	On pay item S-806-H, add "or Steel Posts"

**MISSISSIPPI DEPARTMENT OF TRANSPORTATION  
OFFICE OF STATE AID ROAD CONSTRUCTION  
JACKSON, MISSISSIPPI**

**CERTIFICATION OF PAYMENTS TO SUBCONTRACTORS**

PROJECT NUMBER : \_\_\_\_\_ COUNTY : \_\_\_\_\_  
 CONTRACTOR: \_\_\_\_\_  
 COUNTY/LSBP ENGINEER: \_\_\_\_\_

THIS IS TO CERTIFY THAT PAYMENT HAS BEEN MADE TO THE FOLLOWING SUB-CONTRACTING FIRMS FOR THE AMOUNT INDICATED FOR WORK PERFORMED OR MATERIALS/SUPPLIES PURCHASED, ON THE REFERENCED PROJECT TO SATISFY THE REQUIREMENTS HB 1562 – REGULAR SESSION 2002.

**\*\*\* THIS REPORT IS SUBJECT TO AUDIT \*\*\***

Subcontractor	Date of Payment	Amount Paid This Period	Total Paid to Date	Amount of Retainage Withheld	Amount of Retainage Paid	Percent of Retainage Paid	% Sub-Contract Complete

\_\_\_\_\_  
SUBMITTED BY (Contractor)

DATE: \_\_\_\_\_

\_\_\_\_\_  
TITLE

\_\_\_\_\_  
REVIEWED BY (County/LSBP Engineer)

**\*\*\* INSTRUCTIONS \*\*\***

1. CONTRACTOR MUST SUBMIT THIS REPORT EACH MONTH TO THE COUNTY ENGINEER.
2. IF NO PAYMENTS ARE MADE THIS PERIOD, SUBMIT A NEGATIVE OR NO CHANGE REPORT TO THE COUNTY ENGINEER.
3. THE COUNTY ENGINEER WILL ATTACH THE OCR-484-SA TO THE MONTHLY ESTIMATE BEFORE SUBMITTING THE ESTIMATE TO THE OFFICE OF STATE AID ROAD CONSTRUCTION.
4. PROGRESS ESTIMATES MAY BE WITHHELD IF CONTRACTOR FAILS TO SUBMIT OCR-484-SA.

**OFFICE OF STATE AID ROAD CONSTRUCTION  
MISSISSIPPI DEPARTMENT OF TRANSPORTATION**

**NOTICE TO BIDDERS NO. 8**

**DATE:** November 8, 2011

**SUBJECT:** Errata and Modifications to the 2004 Edition of the Standard Specifications for State Aid Road and Bridge Construction

<u>Page</u>	<u>Subsection</u>	<u>Change</u>
1-21	S-103.02	In the third line of the last paragraph, change "contracts in the same" to "contracts, financed wholly with State funds, in the same".
1-42	S-105.17	In line (b) of the third paragraph, add "claim." at the end of the sentence.
1-47	S-106.04	In the next to last paragraph, change "TMD-22-0100-000" to "TMD-22-01-00-000" and change "TMD-21-0100-000" to "TMD-21-01-00-000".
1-84	S-109.06.2	In the eleventh line of the second paragraph, change "of material invoices" to "of paid material invoices".
<u>1-85</u>	<u>S-109.08</u>	Replace 4 <sup>th</sup> paragraph in it's entirety with "The established base prices for bituminous products and fuels shall be the prices for the month prior to the month of the bid date and are available on the State Aid Website."
1-87	S-109.08	On page 1-87, insert the following after item (A6) and before the paragraph in the middle of the page:  "(A7) Asphalt for Fog Seal Mixture -- One half pay quantity in gallons."
1-87	S-109.08	Delete the last paragraph on the page in toto.
1-88	S-109.08	Under ADJUSTMENTS, change paragraph 5 to read as follows:  No adjustment will be made for items of work accomplished after the expiration of Contract Time except for cases involving natural or manmade disasters or other reasons not inherent to the construction industry. The contractor will submit documentation for the adjustment to the Engineer for approval/disapproval. If approved, the Engineer will prepare a supplemental agreement explaining the adjustment and submit the proper number of copies of the agreement to the Board of Supervisors for their consideration and action. If approved by the Board, all copies will be forwarded to the State Aid Engineer for concurrence. Upon concurrence, the State Aid Engineer will, if necessary, forward the agreement to any other involved parties for their action. A copy of the approved agreement will be furnished to all parties by the State Aid Engineer.
2-7	S-202.07	In the first sentence of the first paragraph, change "S-202" To "S-202-A". In the first sentence of the second paragraph, delete "S-202-A".

**OFFICE OF STATE AID ROAD CONSTRUCTION  
MISSISSIPPI DEPARTMENT OF TRANSPORTATION**

NOTICE TO BIDDERS NO. 10

DATE: July 1, 2005

SUBJECT: MONTHLY ESTIMATE RETAINAGE

The monthly retainage for this project shall be two and one half (2-1/2) percent (%) subject to the provisions found in Subsection **S-109.06.3—Retainage** on page 1-84 of the 2004 Edition of the Mississippi Standard Specifications for State Aid Road and Bridge Construction.

**OFFICE OF STATE AID ROAD CONSTRUCTION  
MISSISSIPPI DEPARTMENT OF TRANSPORTATION**

**NOTICE TO BIDDERS NO. 11**

**DATE:**                    **November 19, 2009**

**SUBJECT:**                **CERTIFICATION OF 100 % PAYMENT TO SUBCONTRACTORS**

Bidders are hereby advised that within thirty (30) days of any Subcontractor completing 100% of any subcontracted work, the Prime Contractor shall make full payment to the Subcontractor (including retainage), complete the following certification, attach it to form OCR-484-S or OCR-484-SA, as applicable, and submit it to the County/LSBP Engineer. Retainage on the subcontract will then be released to the Prime Contractor on a subsequent estimate.

**CERTIFICATION OF 100% OF PAYMENT TO SUBCONTRACTOR**

Date: \_\_\_\_\_  
Project No.: \_\_\_\_\_  
County: \_\_\_\_\_  
Prime Contractor: \_\_\_\_\_  
Subcontractor: \_\_\_\_\_

I, \_\_\_\_\_, hereby certify  
(Printed or typed name of Subcontractor)

that I have been paid 100% (including retainage) of the amount of work subcontracted on the above mentioned project in the amount of \_\_\_\_\_ and that I was paid within thirty (30) Days of when I completed said work.

\_\_\_\_\_  
(Signature of Subcontractor)

\_\_\_\_\_  
(Signature of Prime Contractor)

**Falsification of this Certification is subject to prosecution.**

The undersigned certifies that the above information is complete, true and correct to the best of my knowledge and belief. The undersigned acknowledges that any violation may be subject to the cancellation of the contract, ineligibility for any state or public contract for up to three (3) years, the loss of any license, permit, certificate or other document granted by any agency, department or government entity for the right to do business in Mississippi for up to one (1) year, or both, any and all additional costs incurred because of the contract cancellation or the loss of any license or permit, and may be subject to additional felony prosecution for knowingly or recklessly accepting employment for compensation from an unauthorized alien as defined by 8 U.S.C §1324a(h)(3), said action punishable by imprisonment for not less than one (1) year nor more than five (5) years, a fine of not less than One Thousand Dollars (\$1,000.00) nor more than Ten Thousand Dollars (\$10,000.00), or both, in addition to such prosecution and penalties as provided by Federal law.

BY: \_\_\_\_\_ Date \_\_\_\_\_  
Authorized Officer or Agent

\_\_\_\_\_  
Printed Name of Authorized Officer or Agent Title of Authorized Officer or Agent of Contractor

SWORN TO AND SUBSCRIBED before me on this the \_\_\_\_ day of \_\_\_\_\_, 20\_\_\_\_\_.

\_\_\_\_\_  
NOTARY PUBLIC

My Commission Expires: \_\_\_\_\_

\* As of the effective date of the Mississippi Employment Protection Act, the applicable federal work authorization program is E-Verify™ operated by the U. S. Citizenship and Immigration Services of the U.S. Department of Homeland Security, in conjunction with the Social Security Administration.

**OFFICE OF STATE AID ROAD CONSTRUCTION  
MISSISSIPPI DEPARTMENT OF TRANSPORTATION**

NOTICE TO BIDDERS NO. 14

DATE: June 26, 2008

SUBJECT: MISSISSIPPI EMPLOYMENT PROTECTION ACT

To verify compliance with the "Mississippi Employment Protection Act" Bidders are to complete the following Contractor EEV Certification and agreement form given below.

**CONTRACTOR EEV CERTIFICATION AND AGREEMENT**

Project No: \_\_\_\_\_

County: \_\_\_\_\_

By executing this Certification and Agreement, the undersigned verifies its compliance with Senate Bill 2988 from the 2008 Mississippi Legislative Session, "Mississippi Employment Protection Act," as published in Laws, 2008 and codified in the Mississippi Code of 1972, as amended, and any rules or regulations promulgated by Office of State Aid Road Construction, Department of Employment Security, State Tax Commission, Secretary of State, and Department of Human Services in accordance with the Mississippi Administrative Procedures Law (Section 25-43-1 et seq., Mississippi Code of 1972, as amended), stating affirmatively that the individual, firm, or corporation which is contracting with the County and the Office of State Aid Road Construction has registered with and is participating in a federal work authorization program\* operated by the United States Department of Homeland Security to electronically verify information of newly hired employees pursuant to the Immigration Reform and Control Act of 1986, Pub.L. 99-603, 100 Stat 3359, as amended. The undersigned agrees to inform the Office of State Aid Road Construction if the undersigned is no longer registered or participating in the program.

The undersigned agrees that, should it employ or contract with any subconsultant(s) and/or subcontractor(s) in connection with the performance of this Contract, the undersigned will secure from such subconsultant(s) and/or subcontractor(s) verification of compliance with the Mississippi Employment Protection Act. The undersigned further agrees to maintain records of such compliance and provide a copy of each such verification to the Office of State Aid Road Construction, if requested, for the benefit of the County and the Office of State Road Construction or this Contract.

\_\_\_\_\_  
EEV\* Company Identification Number [Required]

OFFICE OF STATE AID ROAD CONSTRUCTION  
MISSISSIPPI DEPARTMENT OF TRANSPORTATION

NOTICE TO BIDDERS No. 15

DATE: March 11, 2010

SUBJECT: Hot Mix Asphalt Pavement Safety Edge

For the surface lift of hot mix asphalt, the contractor shall attach a manufactured shoe to produce a sound and durable compacted edge joint on the shoulder. The shoe shall be Advent-Edger by Advant-Edge Paving Equipment or Shoulder Wedge Maker (SWM) by Transtech Systems, Inc. An approved equal to these two devices will also be accepted.

During the first placement of the surface lift on the project the contractor shall demonstrate to the satisfaction of the engineer acceptable safety edge construction.

Pavement safety edge accepted will be paid for as an included item in the additional hot mix asphalt required for the safety edge, Pay Item S-403-A.



**OFFICE OF STATE AID ROAD CONSTRUCTION  
MISSISSIPPI DEPARTMENT OF TRANSPORTATION**

NOTICE TO BIDDERS NO. 16

DATE: November 3, 2008

SUBJECT: Safety Apparel

Bidders are advised that the Code of Federal Regulations CFR 23 Part 634 final rule was adopted November 24, 2006 with an effective date of November 24, 2008. This rule requires that **“ All workers within the right of way of a Federal-Aid Highway who are exposed either to traffic (vehicles using the highway for the purposes of travel) or to construction equipment within the work area shall wear high-visibility safety apparel”**. High-visibility safety apparel is defined in the CFR as **“personnel protective safety clothing that is intended to provide conspicuity during both daytime and nighttime usage, and that meets the Performance Class 2 or 3 requirements of the ANSI/ISEA 107-2004 publication entitled American Nation Standard for High-Visibility Safety Apparel and Headwear”**. All workers on County right-of-way shall comply with the Federal Regulation. Workers are defined by the CFR as **“people on foot whose duties place them within the right-of-way of a Federal-Aid Highway, such as highway construction and maintenance forces, survey crews, utility crews, responders to incidents within the highway right-of-way, and law enforcement personnel when directing traffic, investigating crashes, and handling lane closures, obstructed roadways, and disasters within the right-of-way of a Federal-Aid Highway”**.

You can access this final rule at the following link:

<http://a257.g.akamaitech.net/7/257/2422/01jan20061800/edocket.access.gpo.gov/2006/pdf/E6-19910.pdf>

**OFFICE OF STATE AID ROAD CONSTRUCTION  
MISSISSIPPI DEPARTMENT OF TRANSPORTATION**

NOTICE TO BIDDERS NO. 17

DATE: February 23, 2009

**SUBJECT: Department of Labor Ruling**

On December 19, 2008 the U.S. Department of Labor issued a final rule revising their regulations in 29 CFR Parts 3 and 5. This rule takes effect for all Federal funded contracts awarded after January 19, 2009.

The primary change in the rule is a provision that requires Contractors to limit the amount of personal information on the weekly payroll submissions. Personal addresses and full social security numbers may no longer be used. Contractors must use an “. . . individually identifying number for each employee (e.g., the last four digits of the employee’s social security number).” Form FHWA-1273 - “Required Contract Provisions Federal-aid Construction Contracts” will eventually be revised to reflect this change.

Until the revision is made to FHWA-1273, bidders are advised to disregard any requirement in FHWA-1273 regarding the use of personal addresses and full social security numbers, such as in Section V, Paragraph 2b.

Bidders are also advised that the requirement for maintaining and submitting form FHWA-47, as referenced in FHWA-1273 Section VI, is no longer required on construction projects.

Supplemental Specification  
**901-S-102-1**  
Bidding Requirements and  
Conditions

OFFICE OF STATE AID ROAD CONSTRUCTION  
MISSISSIPPI DEPARTMENT OF TRANSPORTATION

DATE: March 11, 2010

SUBJECT: Bid Bond Agent

Delete the first sentence of the second paragraph of S-102.08 on page 1-19, and substitute the following:

If a bid bond is offered as guaranty, the bond must be on a form approved by the State Aid Engineer, made by a Surety, and must be acceptable to the Board and the State Aid Engineer and signed or countersigned by a Mississippi Agent or Qualified Nonresident Agent and the bidder.

OFFICE OF STATE AID ROAD CONSTRUCTION  
MISSISSIPPI DEPARTMENT OF TRANSPORTATION

**DATE:** March 11, 2010

**SUBJECT:** Contract Bond Agent or Liability Insurance Agent

Delete the last sentence of the paragraph of S-103.05 on page 1-22, and substitute the following:

**The bond or bonds shall be negotiated for, procured from, signed or countersigned by, and the premium paid to a Mississippi Agent or Qualified Nonresident Agent of the Surety.**

Delete the last sentence of the first paragraph of S-103.06.1 on page 1-22, and substitute the following:

**Each policy shall be signed or countersigned by a Mississippi Agent or Qualified Nonresident Agent of the insurance company.**

Delete the last sentence of the second paragraph of S-103.06.1 on page 1-23, and substitute the following:

**Each policy shall be signed or countersigned by a Mississippi Agent or Qualified Nonresident Agent of the insurance company.**

Supplemental Specification  
**901-S-104-1**  
Removal and Disposal of Structures  
and Obstructions

OFFICE OF STATE AID ROAD CONSTRUCTION  
MISSISSIPPI DEPARTMENT OF TRANSPORTATION

DATE: July 1, 2005

**SUBJECT: Changes in Character of Work and Changed Physical Conditions and Removal and Disposal of Structures and Obstructions:**

Section S-104 - SCOPE OF WORK; of the MISSISSIPPI STANDARD SPECIFICATIONS FOR STATE AID ROAD AND BRIDGE CONSTRUCTION 2004 EDITION is hereby amended as follows:

**901-S-104.02.1--Changes in Character of the Work and Changed Physical Conditions:** Delete the last sentence of the first paragraph and add the following paragraphs:

Upon written notification, the Engineer will investigate the conditions, and if it is determined that the conditions materially differ and cause an increase or decrease in the cost or time required for the performance of any work under the contract, an adjustment, excluding anticipated profits, will be made and the contract modified in writing accordingly. The Engineer will notify the Contractor, in writing, of the determination whether or not an adjustment of the contract is warranted.

No contract adjustment which results in a benefit to the contractor will be allowed unless the contractor has provided the required written notice.

In the second paragraph, after the words " cannot be reached," delete "the State Aid Engineer" and insert "the Board, with the approval of the State Engineer,". Then delete the words "which the State Aid Engineer has" and insert "which the Board and the State Aid Engineer have".

**901-S-104.05--Removal and Disposal of Structures and Obstructions:** After the last paragraph on page 1-27, add the following paragraph:

The Contractor shall also furnish the Engineer a certified letter stating that the area of disposal is not in a wetland.

**901-S-104.06--Rights in and Use of Materials Found on the Work:** After the first sentence of the third paragraph insert the following sentence:

The Contractor shall also furnish the Engineer a certified letter stating that the area of disposal is not in a wetland.

OFFICE OF STATE AID ROAD CONSTRUCTION

MISSISSIPPI DEPARTMENT OF TRANSPORTATION

DATE: July 01, 2005

SUBJECT: Material Pits:

Section S-107- LEGAL RELATIONS AND RESPONSIBILITY TO PUBLIC; of the MISSISSIPPI STANDARD SPECIFICATIONS FOR STATE AID ROAD AND BRIDGE CONSTRUCTION 2004 EDITION is hereby amended as follows:

**901-S-107.23--Material Pits:** Delete the first and second paragraph on page 1-66 and replace with the following paragraphs:

Before a pit (quarry) is opened (area cleared or overburden disturbed), furnish to the County Engineer a letter from the Executive Director of the Department of Archives and History, P. O. Box 571, Jackson, Mississippi 39205 (telephone number 601/576-6850), stating that the pit site is satisfactory from an archaeological and historical standpoint. Additionally, the contractor will furnish the Engineer either a copy of the " Notification of Exempt Operations" or a copy of the (permanent or temporary) Class II Permit approval from the Mississippi Department of Environmental Quality, Office of Geology.

For material pits located in Clarke, Covington, Forrest, George, Greene, Hancock, Harrison, Jackson, Jones, Lamar, Pearl River, Perry, Stone and Wayne Counties, the Contractor will be required to make special considerations regarding gopher tortoises. In addition to the normal required documentation associated with material pits, the Contractor shall, for each site used to obtain or dispose of materials associated with material pits located in these Counties, provide the Engineer with a letter from a qualified biologist certifying that the site was inspected prior to any clearing of vegetation or disposal of project materials and that the site is not inhabited by gopher tortoises, or appropriate avoidance measures have been installed. No individual lacking the proper State or Federal license shall touch or otherwise harass a gopher tortoise.

All costs involved in obtaining letters of clearance shall be born by the Contractor

OFFICE OF STATE AID ROAD CONSTRUCTION  
MISSISSIPPI DEPARTMENT OF TRANSPORTATION

DATE: May 10, 2006

**SUBJECT: Permits, Licenses and Taxes:**

Section S-107-LEGAL RELATIONS AND RESPONSIBILITY TO PUBLIC; of the MISSISSIPPI STANDARD SPECIFICATIONS FOR STATE AID ROAD AND BRIDGE CONSTRUCTION 2004 EDITION is hereby amended as follows:

901-S-107.02-Permits, Licenses and Taxes. Delete in toto Subsection 107.02 on page 1-50, and substitute the following:

Except as provided in S-107.09, and S-107.22, the Contractor or Subcontractor shall procure all permits and licenses, pay all charges, fees, and taxes, and give all notices necessary and incidental to the due and lawful prosecution of the work. At any time during the life of this contract, State Aid may audit the Contractor's or Subcontractor's compliance with the requirements of this section.

The Contractor or Subcontractor is advised that the "Mississippi Special Fuel Tax Law", Section 27-55-501, et seq. and the Mississippi Use Tax Law, Section 27-67-1, et seq., Mississippi Code of 1972, Annotated, and their requirements and penalties apply to any contract or subcontract for construction, reconstruction, maintenance or repairs, for contracts or subcontracts entered into with the State of Mississippi, any political subdivision of the State of Mississippi, or any Department, Agency, Institute of the State of Mississippi or any political subdivision thereof.

The Mississippi State Tax Commission will be notified of the name and address of Contractors or any Subcontractors that are awarded State Aid contracts. The Contractor or Subcontractor will be subject one or more audits during the life of this contract to make certain that all applicable fuel taxes are being paid promptly as outlined in Section 27-55-501, et seq., Mississippi Code of 1972, Annotated, and any sales and/or use taxes, as outlined in Section 27-67-1, et seq., Mississippi Code of 1972, Annotated are being paid in compliance with the law.

SPECIAL PROVISION  
901-S-618-1  
PROJECT NO. SAP-45(11)M  
MADISON COUNTY

DATE: JUNE, 2013

SUBJECT: SUPPLEMENT TO TRAFFIC CONTROL PLAN

The Traffic Control Plan on the project road will require one lane closure of traffic where required. For Overlay operations, Leveling operations, and Base Repair operations temporary construction signs shall be placed in accordance with the Traffic Control Plan (Sheet 2-E) in the plans. Flaggers shall be used to control the traffic along the road and shall move with the operation of work. Traffic control devices shall be placed wherever necessary and remain as long as needed.

A shadow vehicle shall be positioned approximately 300 feet in front and behind of striping operations. The shadow vehicle shall carry a "Roadway Striping Ahead" sign located at least six feet above the pavement. A flashing yellow light shall be installed above the sign and any other vehicles used in the striping operations.

There will be no trucks, equipment, or supplies parked or stored within close proximity of a traveled lane in use of public traffic except for vehicles or supplies actually engage in the work when work is in progress.

Ingress and egress shall be maintained at all times to residents and businesses.

The specific requirement of the Contractor's responsibilities are as required by Subsection S-104.04, S-105.15, S-107.07-10; Traffic Control Plan Sheet 2-E of the plans; and Part VI of the MUTCD latest edition. The requirements of this special provision do not alter or in any way change the requirements of the foregoing or any other requirements of the Contract except as specifically stated herein as an alteration or change.

Within three weeks of a traffic related accident occurring within the limits of the project, the Contractor shall provide the Project Engineer with a copy of the accident report for each accident. If analysis of the accident report by appropriate authority reveals that corrective action is required, the Contractor shall proceed immediately with appropriate corrective action.

Calvin Harris of Warnock and Associates, LLC is designated as the responsible person to insure the Contractor constructs, installs, and maintains the devices called for on the Traffic Control Plan. An inspection of the traffic control signs and devices shall be performed at periods not exceeding one week regardless of construction activity within the project. The Contractor will be required to immediately rectify any noted deficiencies.



Supplemental Specification  
**901-S-708-1**  
Non-Metal Drainage Structures

OFFICE OF STATE AID ROAD CONSTRUCTION  
MISSISSIPPI DEPARTMENT OF TRANSPORTATION

DATE: May 10, 2006

**SUBJECT: Non-Metal Drainage Structures:**

Section S-708 - NON-METAL STRUCTURES AND CATTLEPASSES; of the MISSISSIPPI STANDARD SPECIFICATIONS FOR STATE AID ROAD AND BRIDGE CONSTRUCTION 2004 EDITION is hereby amended as follows:

**901-S-708.02.3.2--Marking:** Delete the second sentence of Subsection 708.02.3.2 on page 7-53, and substitute the following:

Machine made Pipe shall be marked in accordance with one of the following methods: 1) the pipe shall be inscribed on the outside of the pipe and stenciled on the inside of the pipe, or 2) the pipe shall be inscribed on the inside of the pipe, only. All other pipe may be stenciled.

**901-S-708.22.2--Exceptions to AASHTO:** Delete the sixth paragraph of Subsection 708.22.2 on page 7-61.

OFFICE OF STATE AID ROAD CONSTRUCTION  
MISSISSIPPI DEPARTMENT OF TRANSPORTATION  
AFFIDAVIT

(To be Executed in Duplicate)

State of Mississippi  
County of \_\_\_\_\_

I, \_\_\_\_\_ (Name of person signing affidavit), individually, and in my  
capacity as \_\_\_\_\_ (Title) of \_\_\_\_\_  
(Name of Firm, Partnership, or Corporation) being duly sworn, on oath, do depose and say as follows:

That \_\_\_\_\_ (Name of Firm, Partnership, or Corporation), Bidder  
on Project No. \_\_\_\_\_ in \_\_\_\_\_ County, Mississippi has not either directly  
or indirectly entered into any agreement, participated in any collusion; or otherwise taken any action in restraint of free  
competitive bidding in connection with this contract; nor have any of its officers, partners, employees, or principal owners.

Further, being duly sworn or under penalty of perjury under the laws of the United States and the State of Mississippi; certifies  
that, except as noted below, the company or any person associated therewith in the capacity of owner, partner, director,  
manager, auditor, or any position involving the administration of federal funds:

- (a) Are not presently debarred, suspended, proposed for debarment, declared ineligible, or voluntarily excluded from covered transactions by any Federal department or agency;
- (b) Have not within a three-year period preceding this proposal been convicted of or had a civil judgement rendered against them for commission of fraud or a criminal offense in connection with obtaining, attempting to obtain, or performing a public (Federal, State or local) transaction or contract under a public transaction; violation of Federal or State antitrust statues or commission of embezzlement, theft, forgery, bribery, falsification or destruction of records, making false statements, or receiving stolen property;
- (c) Are not presently indicted for or otherwise criminally or civilly charged by a governmental entity (Federal, State or local) with commission of any of the offenses enumerated in Item (b) of this subsection; and
- (d) Have not within a three-year period preceding this application/proposal had one or more public transactions (Federal, State or local) terminated for cause or default.

Initial here " \_\_\_\_\_ " if exceptions are attached and made a part thereof. Any exceptions shall address to whom it applies, initiating agency and dates of such action.

The Bidder shall provide immediate written notice to the Board of Supervisors and the State Aid Engineer at any time, prior to or after award, that it is known a certification was erroneous when executed or has become erroneous by reason of changed circumstances.

NOTE: Exceptions will not necessarily result in denial of award but will be considered in determining bidder responsibility. Providing false information may result in criminal prosecution or administrative sanctions.

All of the foregoing and attachments (when indicated) are true and correct.

(SEAL) Signature: \_\_\_\_\_  
Title: \_\_\_\_\_  
Sworn before me this \_\_\_\_\_ day of \_\_\_\_\_ 20\_\_\_\_  
My commission expires \_\_\_\_\_ Notary Public: \_\_\_\_\_

NOTE: **FAILURE TO PROPERLY SIGN AND NOTARIZE THIS AFFIDAVIT WILL DISQUALIFY THE BID.**

OFFICE OF STATE AID ROAD CONSTRUCTION  
MISSISSIPPI DEPARTMENT OF TRANSPORTATION  
AFFIDAVIT

(To be Executed in Duplicate)

State of Mississippi  
County of \_\_\_\_\_

I, \_\_\_\_\_ (Name of person signing affidavit), individually, and in my  
capacity as \_\_\_\_\_ (Title) of \_\_\_\_\_  
(Name of Firm, Partnership, or Corporation) being duly sworn, on oath, do depose and say as follows:

That \_\_\_\_\_ (Name of Firm, Partnership, or Corporation), Bidder  
on Project No. \_\_\_\_\_ in \_\_\_\_\_ County, Mississippi has not either directly  
or indirectly entered into any agreement, participated in any collusion; or otherwise taken any action in restraint of free  
competitive bidding in connection with this contract; nor have any of its officers, partners, employees, or principal owners.

Further, being duly sworn or under penalty of perjury under the laws of the United States and the State of Mississippi; certifies  
that, except as noted below, the company or any person associated therewith in the capacity of owner, partner, director,  
manager, auditor, or any position involving the administration of federal funds:

- (a) Are not presently debarred, suspended, proposed for debarment, declared ineligible, or voluntarily excluded from covered transactions by any Federal department or agency;
- (b) Have not within a three-year period preceding this proposal been convicted of or had a civil judgement rendered against them for commission of fraud or a criminal offense in connection with obtaining, attempting to obtain, or performing a public (Federal, State or local) transaction or contract under a public transaction; violation of Federal or State antitrust statues or commission of embezzlement, theft, forgery, bribery, falsification or destruction of records, making false statements, or receiving stolen property;
- (c) Are not presently indicted for or otherwise criminally or civilly charged by a governmental entity (Federal, State or local) with commission of any of the offenses enumerated in Item (b) of this subsection; and
- (d) Have not within a three-year period preceding this application/proposal had one or more public transactions (Federal, State or local) terminated for cause or default.

Initial here " \_\_\_\_\_ " if exceptions are attached and made a part thereof. Any exceptions shall address to whom it applies, initiating agency and dates of such action.

The Bidder shall provide immediate written notice to the Board of Supervisors and the State Aid Engineer at any time, prior to or after award, that it is known a certification was erroneous when executed or has become erroneous by reason of changed circumstances.

NOTE: Exceptions will not necessarily result in denial of award but will be considered in determining bidder responsibility. Providing false information may result in criminal prosecution or administrative sanctions.

All of the foregoing and attachments (when indicated) are true and correct.

(SEAL) Signature: \_\_\_\_\_  
Title: \_\_\_\_\_  
Sworn before me this \_\_\_\_ day of \_\_\_\_\_ 20\_\_\_\_  
My commission expires \_\_\_\_\_ Notary Public: \_\_\_\_\_

NOTE: **FAILURE TO PROPERLY SIGN AND NOTARIZE THIS AFFIDAVIT WILL DISQUALIFY THE BID.**

**MISSISSIPPI DEPARTMENT OF TRANSPORTATION**

**SECTION 903**

**CONTRACT** (Rev. 03-11-2010)

CONTRACT FOR \_\_\_\_\_

LOCATED IN THE COUNTY OF \_\_\_\_\_

STATE OF MISSISSIPPI

COUNTY OF \_\_\_\_\_

This contract entered into by and between the Board of Supervisors of \_\_\_\_\_  
\_\_\_\_\_ County, Mississippi, on the one hand, and the  
undersigned contractor, on the other, witnesseth:

That in consideration of the payment by the Board of Supervisors of the prices set out in the proposal hereto attached, to the undersigned contractor, such payment to be made in the manner and at the time or times specified in the specifications and the special provisions, if any, the undersigned contractor hereby agrees to accept the prices stated in the proposal in full compensation for the furnishing of all materials and equipment and the executing of all the work contemplated in this contract.

It is understood and agreed that the advertising according to law, the notice to contractors, the instructions to bidders, the proposal for the contract, the specifications, the revisions of the specifications, the special provisions, and also the plans for the work herein contemplated, said plans showing more particularly the details of the work to be done, shall be held to be, and are hereby made a part of this contract by specific reference thereto and with like effect as if each and all of said instruments had been set out fully herein in words and figures.

It is further agreed that for the same consideration the undersigned contractor shall be responsible for all loss or damage arising out of the nature of the work aforesaid, or from the action of the elements, and unforeseen obstructions or difficulties which may be encountered in the prosecution of the same and for all risks of every description connected with the work for faithfully completing the whole work in good and workmanlike manner according to the approved Plans, Specifications, Special Provisions and requirements of the Board of Supervisors and the State Aid Engineer.

It is further agreed that the work shall be done under the direct supervision and to the complete satisfaction of the County Engineer, or his authorized representatives, subject to inspection at all times and approval by the State Aid Engineer, and when Federal Funds are involved, by the Federal Highway Administration, or their agents as the case may be, in accordance with those Acts of the Legislature of the State of Mississippi approved by the Governor and such rules and regulations issued pursuant thereto by the State Aid Engineer of the Mississippi Department of Transportation Authorized Federal Agencies.

The Contractor agrees that all labor as outlined in the Special Provisions will be secured from list furnished by

It is agreed and understood that each and every provision of law and clause required by law to be inserted in this, contract shall be deemed to be inserted herein and this contract shall be read and enforced as though it were included herein and, if through mere mistake or otherwise any such provision is not inserted, or is not correctly inserted. then upon the application of either party hereto, the contract shall forthwith be physically amended to make such insertion.

The Contractor agrees that he has read each and every clause of this Contract, and fully understands the meaning of same and that he will comply with all the terms, covenants and agreements therein set forth.

Witness our signatures this the \_\_\_\_\_ day of \_\_\_\_\_ 20 \_\_\_\_

(1) \_\_\_\_\_ APPROVED \_\_\_\_\_ 20 \_\_\_\_  
Contractor(s)

By \_\_\_\_\_ (3) \_\_\_\_\_  
State Aid Engineer

TITLE \_\_\_\_\_  
Signed and Sealed in the presence of:  
(names and addresses of witnesses) APPROVED \_\_\_\_\_ 20 \_\_\_\_

(1) \_\_\_\_\_ (4) TRANSPORTATION COMMISSION OF THE  
STATE OF MISSISSIPPI (Approval of the  
Commission not Required when no Federal Funds are  
involved.)

(2) BOARD OF SUPERVISORS  
\_\_\_\_\_ County

By \_\_\_\_\_ President By \_\_\_\_\_ Executive Director

Award authorized by the Board of Supervisors of \_\_\_\_\_

County in session on the \_\_\_\_\_ Day of \_\_\_\_\_ 20 \_\_\_\_

Minute Book No. \_\_\_\_\_, Page no. \_\_\_\_\_.

**MISSISSIPPI DEPARTMENT OF TRANSPORTATION**

SECTION 904

**CONTRACT BOND** (Rev. 03-11-2010)

CONTRACT BOND FOR \_\_\_\_\_

LOCATED IN THE COUNTY OF \_\_\_\_\_

STATE OF MISSISSIPPI

COUNTY OF \_\_\_\_\_

Know all men by these presents: that we, \_\_\_\_\_  
Principal, a \_\_\_\_\_ residing at \_\_\_\_\_  
in the State of \_\_\_\_\_ and \_\_\_\_\_  
residing at \_\_\_\_\_ in the State of \_\_\_\_\_  
authorized to do business in the State of Mississippi, under the laws thereof, as surety, are held and  
firmly bound unto the Board of Supervisors of \_\_\_\_\_ County,  
State of Mississippi, in the Penal sum of \_\_\_\_\_  
(\$) \_\_\_\_\_ Dollars, lawful money of the United States of America. to be paid  
to it for which payment well and truly to be made, we bind ourselves, our heirs, administrators,  
successors, or assigns jointly and severally by these presents.

Signed and sealed this the \_\_\_\_\_ day of \_\_\_\_\_ A. D., 20 \_\_\_\_\_ .

The conditions of this bond are such, that whereas the said \_\_\_\_\_  
principal, has (have) entered into a contract with the Board of Supervisors of \_\_\_\_\_  
County of the State of Mississippi, bearing the date of \_\_\_\_\_ day of \_\_\_\_\_  
\_\_\_\_\_ A. D., 20 \_\_\_\_\_ hereto annexed, for the construction of certain highways in the  
said county as mentioned in said contract in accordance with the plans, specifications and special  
provisions therefor, on file in the office of the Chancery Clerk of the county and state herein named.

Now, therefore, if the above bounden \_\_\_\_\_  
in all things shall stand to and abide by and well and truly observe, do, keep and perform all and  
singular the terms, covenants, conditions, guarantees and agreements in said contract, contained on  
his (their) 'part to be observed, done, kept and performed and each of them, at the time and in the  
manner and form and furnish all of the material and equipment specified in said contract in strict  
accordance with the terms of said contract which said plans, specifications and special provisions  
are included in and form a part. of said contract and shall maintain, the said work contemplated until

its final completion and acceptance as specified in the currently approved specifications, and save harmless said Board of Supervisors from any loss or damage arising out of or occasioned by the negligence, wrongful or criminal act, overcharge, fraud, or any other loss or damage whatsoever, on the part of said principal(s), his (their) agents, servants, or employees in the performance of said work or in any manner connected therewith, an shall be liable and responsible in a civil action instituted by the Board of Supervisors at the instance of the State Aid Engineer or any officer of the said county authorized in such cases, for double any amount in money or property, the Board of Supervisors may lose or be overcharged or otherwise defrauded of, by reason of any wrongful or criminal act, if any, of the Contractor(s), his (their) agents, or employees, and shall promptly pay the said agents, servants and employees and all persons furnishing labor, material, equipment or supplies therefor, including premiums incurred, for Surety Bonds, Liability Insurance, and Workmen's Compensation Insurance; with the additional obligation that such Contractor shall promptly make payment of all taxes, licenses, assessments, contributions, damages, penalties and interest thereon, when and as the same may be due this State, or any county, municipality, board, department Commission or political Subdivision; in the course of the performance of said work, and in accordance with Sections 31-5-51 et seq. of the Mississippi Code of 1972, and other State statutes applicable thereto, and shall carry out to the letter and to the satisfaction of both the Board of Supervisors of the aforesaid county and the State Aid Engineer all, each and every one of the stipulations, obligations, conditions, covenants and agreements and terms of said contract in accordance with all terms thereof and all of the expense and cost and Attorney's fees that may be incurred in the enforcement of the performance of said contract, or in the enforcement of the conditions and obligations of this bond, then this obligation shall be null and void, otherwise to be and remain in full force and virtue.

Witness our signatures this the \_\_\_\_\_ day of \_\_\_\_\_ A. D., 20 \_\_\_\_\_

\_\_\_\_\_  
(CONTRACTORS) Principal

\_\_\_\_\_  
SURETY

By: \_\_\_\_\_

By: \_\_\_\_\_

(Signature) ATTORNEY IN FACT.

TITLE \_\_\_\_\_  
(Contractor's Seal)

\_\_\_\_\_  
Name and address of MS agent or qualified non-resident agent

(Surety Seal)